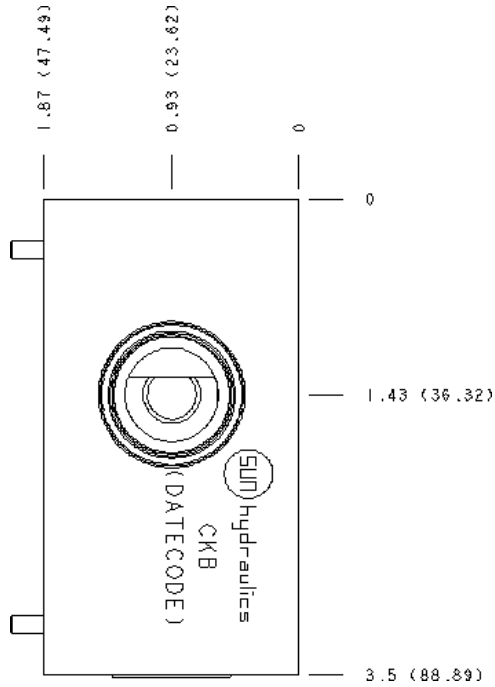
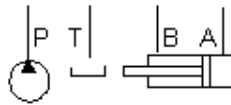


Relief, B to T



**TECHNICAL DATA**

Body Type	Sandwich
Interface	ISO 07
Body Features	B to T
Stack Height	1.97 in.

**NOTES**

**Important:** Carefully consider the maximum system pressure. The pressure rating of the manifold is dependent on the manifold material, with the port type/size a secondary consideration. Manifolds constructed of aluminum are not rated for pressures higher than 3000 psi (210 bar), regardless of the port type/size specified.

**PORT DESIGNATORS**

Modifiers	Ports
CKB, /V	Gage Port (Plugged): 1/4" NPTF;
CKB/M, /Z	Gage Port (Plugged): 1/4" BSPP;

**INCLUDED COMPONENTS**

Part	Description	Quantity
340-003	Pipe Plug	1
500-001-111	O-Ring	2
500-001-118	O-Ring	4
700-006	Seal Plate	1
811-001-006	Pin	2
A330-006-008	SAE Plug	1

**CONFIGURATION OPTIONS**

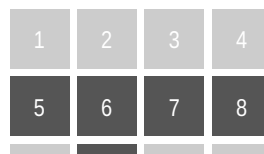
Model Code Example: CKB

**MODIFIER**

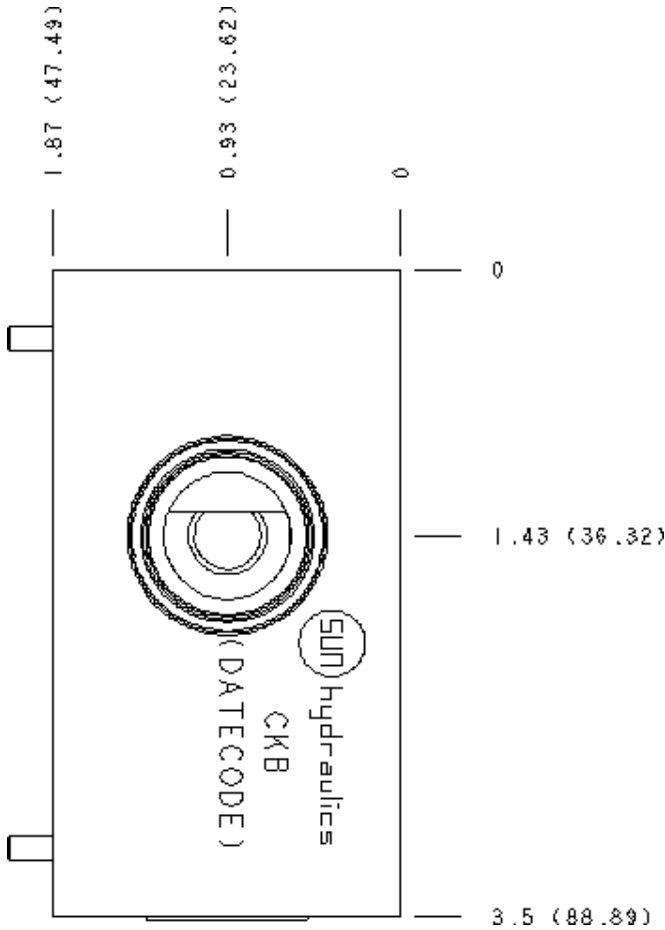
- 6061-T651 Aluminum, Buna-N
- IM** 6061-T651 Aluminum, Metric, Buna-N
- IS** 65-45-12 Ductile Iron, Buna-N, Blackened
- IT** 65-45-12 Ductile Iron, Metric, Buna-N, Blackened
- IV** 6061-T651 Aluminum, Viton
- IW** 65-45-12 Ductile Iron, Metric, Viton, Blackened
- IY** 65-45-12 Ductile Iron, Viton, Blackened
- IZ** 6061-T651 Aluminum, Metric, Viton

**MANIFOLD FACES**

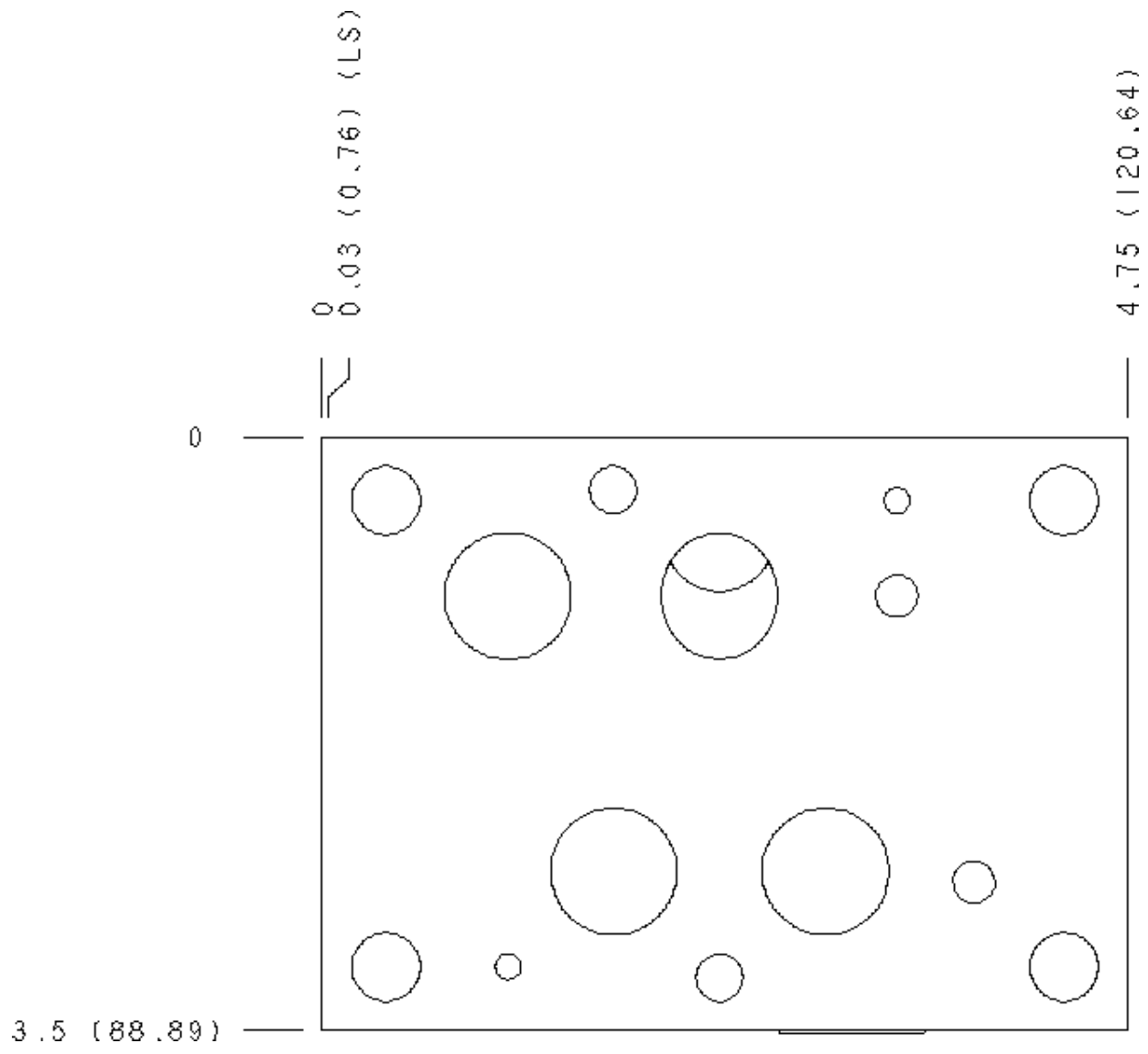
**FACE GRID**



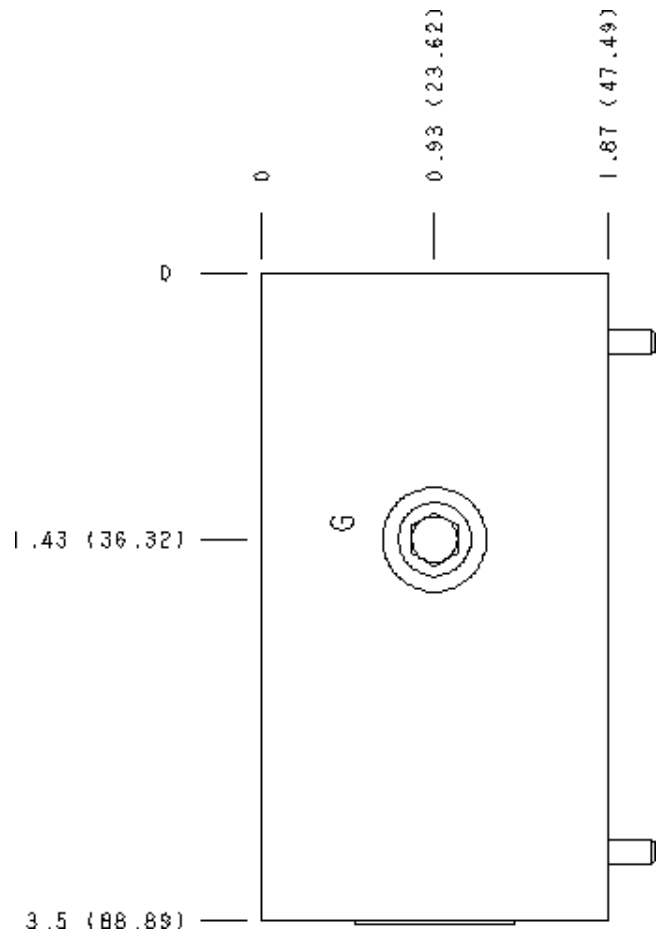
Face 5



Face 6



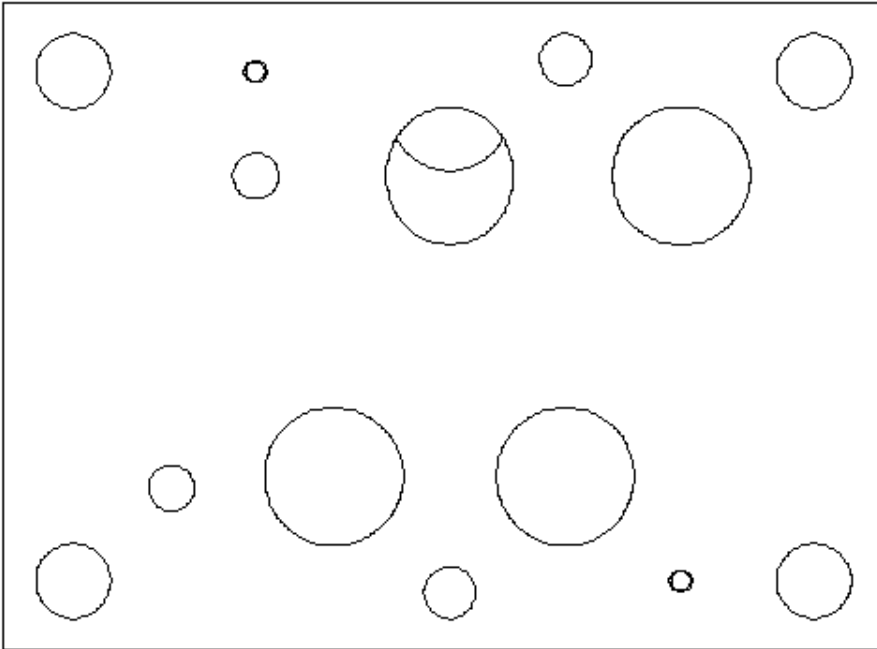
**Face 7**



**Face 8**

4.75 (120.64)

0.03 (0.76) (LS)



0

3.5 (88.89)

**Face 10**

