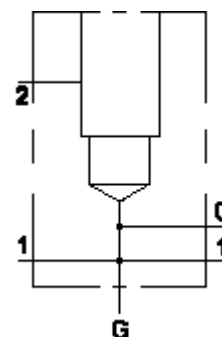


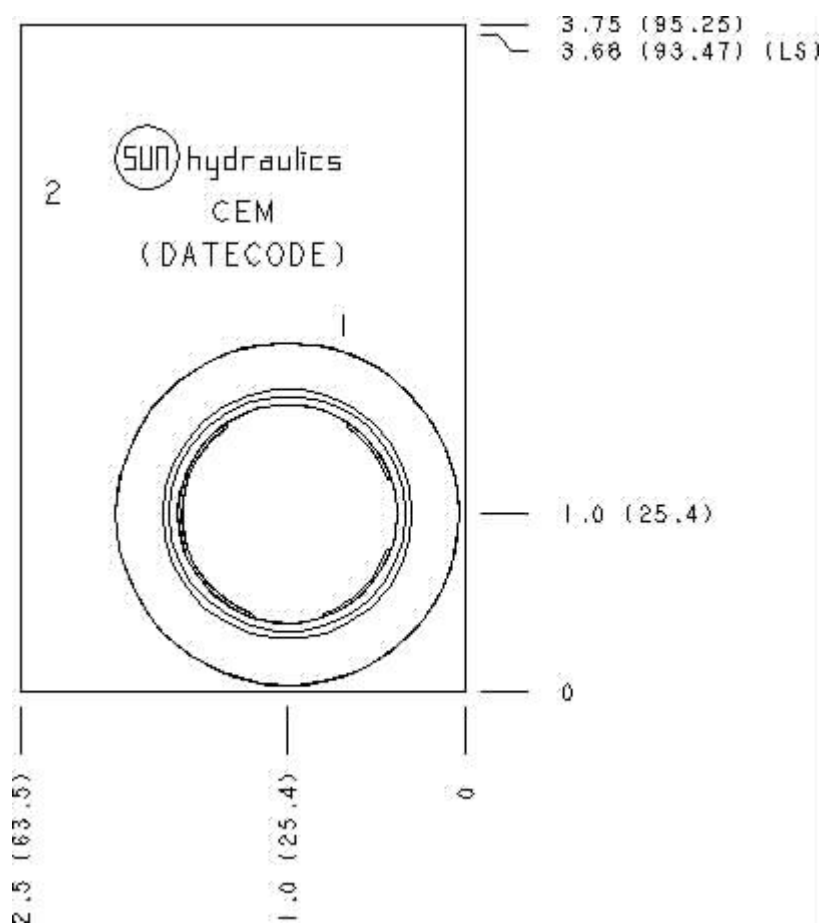
Functional Group:
 Products : Manifolds : Line mount : Relief : 2 Port : Through port 1 with gage port

Model:
 CEM

Aluminum Body Pressure Rating: 3000 psi (210 bar)
 Ductile Iron Body Pressure Rating: 5000 psi (350 bar)



Face: 8



Cartridge extension measurement is to the centerline of the cartridge.

Port Headings and Sizes

CEM	Ports 1 & 2	SAE 16
CEM	Gage Port	1/4" NPTF

Technical Data

	U.S. Units	Metric Units
Model Weight	1.26 lb.	0.57 kg.
Cavity	T-3A	
Body Features	Through port with gauge port	
Body Type	Line mount	
Interface	None	
Open Cavity Quantity	1	
Mounting Hole Thread	.250-20 UNC - 2B in.	
Mounting Hole Depth	.50 in.	
Mounting Hole Quantity	2	

Option Selection

U.S. Dollar ▼

Model Code	Description
CEM	Aluminum, Buna-N, U.S. Units
CEM/S	Ductile Iron, Buna-N, U.S. Units

Special Notes

- No Special Notes Available for selected model.
-
-