

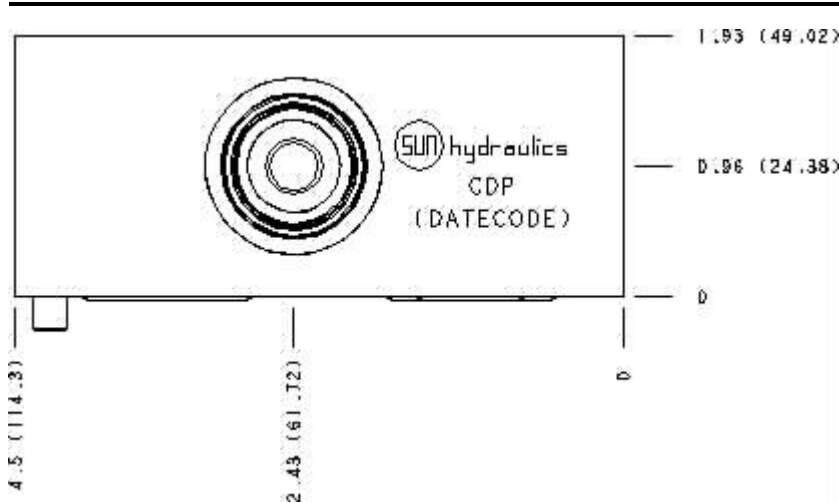
Functional Group:

Products : Manifolds : Sandwich : Relief : ISO 08 : P to T

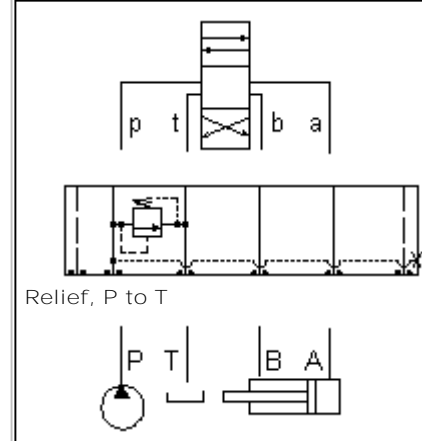
Model:

CDP

Face : 9



Function



Cartridge extension measurement is to the centerline of the cartridge.

Aluminum Body Pressure Rating: **3000 psi (210 bar)**

Ductile Iron Body Pressure Rating: **5000 psi (350 bar)**

Port Headings and Sizes:

Gage Port (Plugged)
1/4" BSPP

Gage Port (Plugged)
1/4" NPTF

Technical Data

	U.S. Units	Metric Units
Model Weight	4.01 lb.	1.82 kg.
Cavity	T-3A	
Body Features	P to T	
Body Type	Sandwich	
Interface	ISO 08	
Open Cavity Quantity	1	
Stack Height	1.94 in.	49 mm

Option Selection:

Model Code

Description

CDP	Aluminum, Buna-N, U.S. Units
CDP/M	Aluminum, Buna-N, Metric
CDP/S	Ductile Iron, Buna-N, U.S. Units
CDP/T	Ductile Iron, Buna-N, Metric
CDP/V	Aluminum, Viton, U.S. Units
CDP/W	Ductile Iron, Viton, Metric
CDP/Y	Ductile Iron, Viton, U.S. Units
CDP/Z	Aluminum, Viton, Metric

Special Notes :

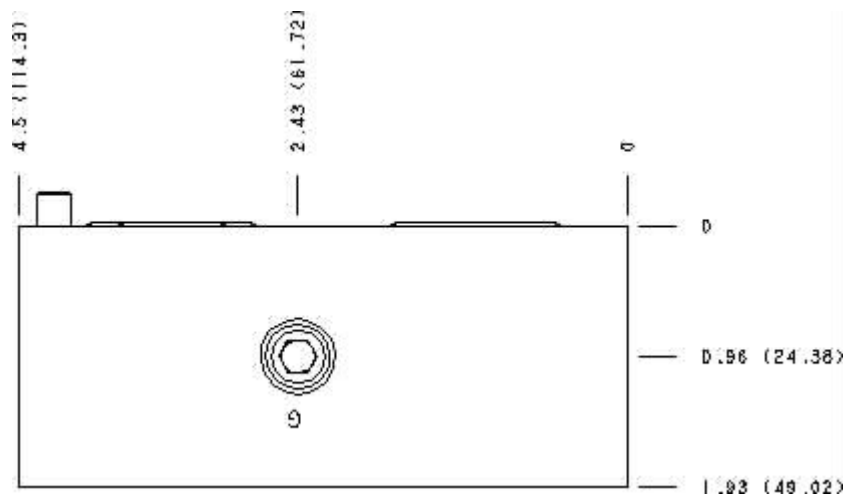
No Special Notes available for selected Model.



Functional Group:
Products : Manifolds : Sandwich : Relief : ISO 08 : P to T

Model:
CDP

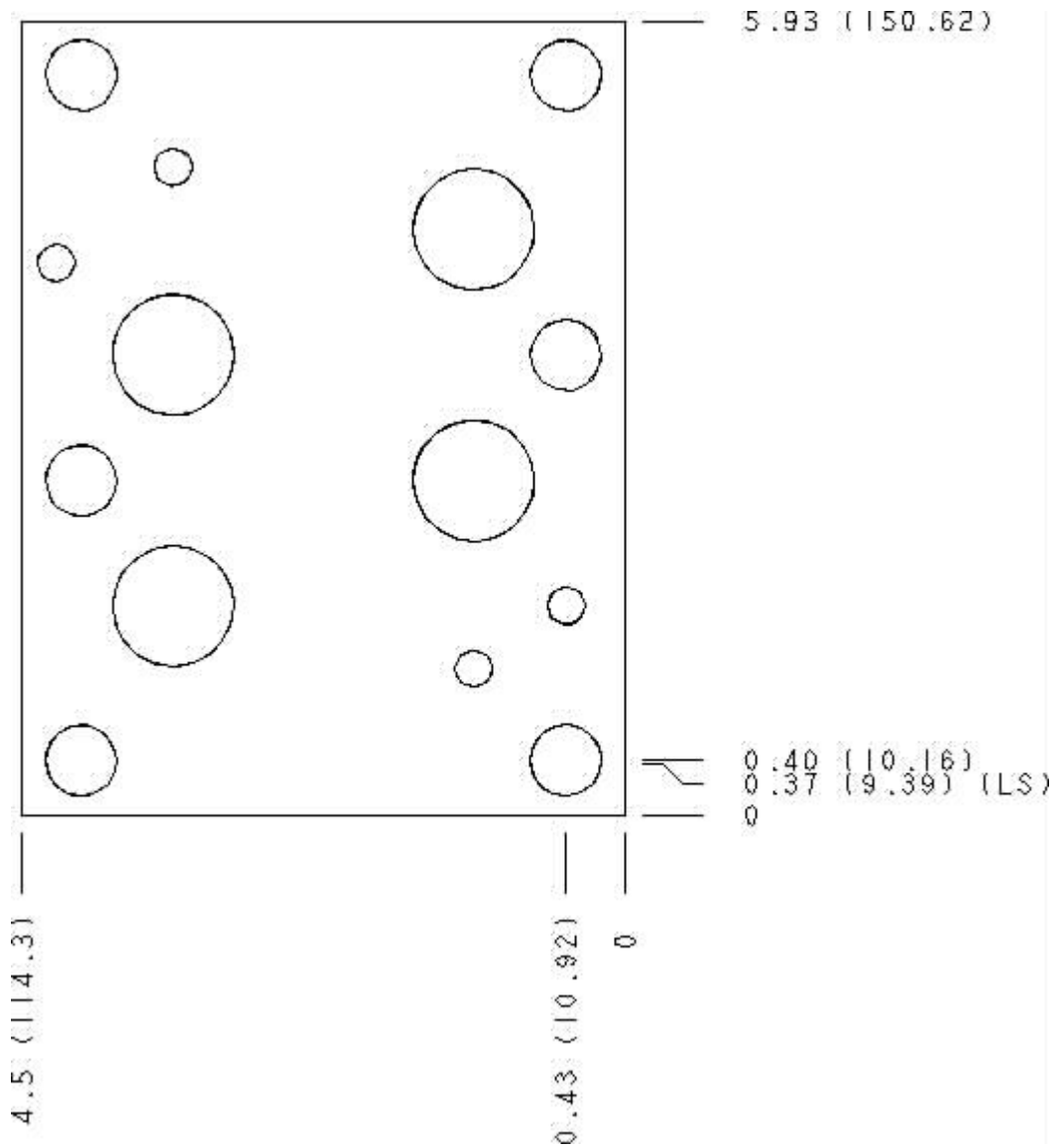
Face : 1



Cartridge extension measurement is to the centerline of the cartridge.



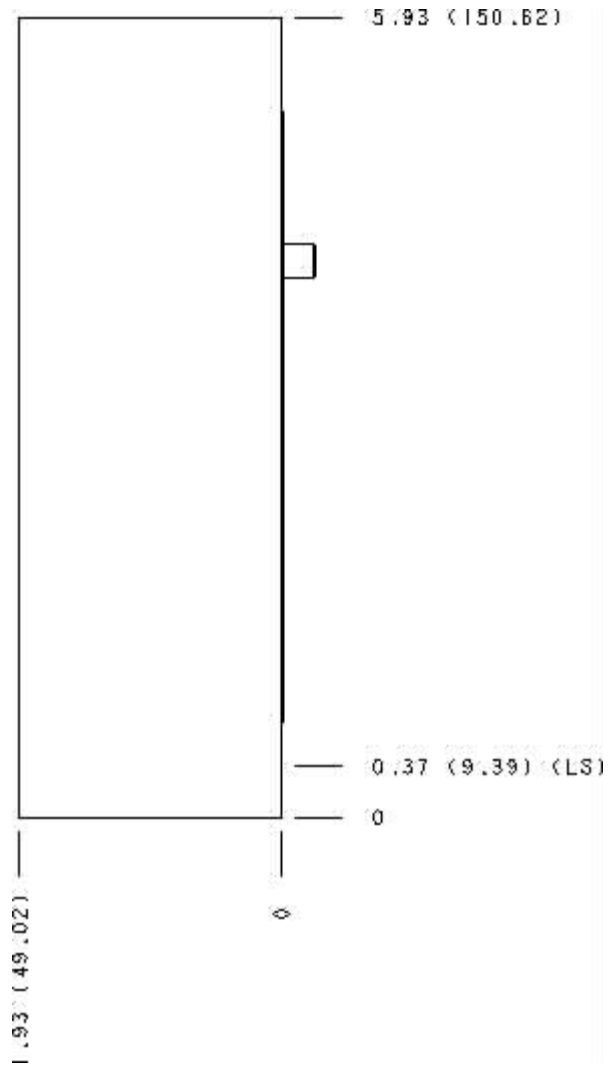
Face : 5



Cartridge extension measurement is to the centerline of the cartridge.



Face : 6



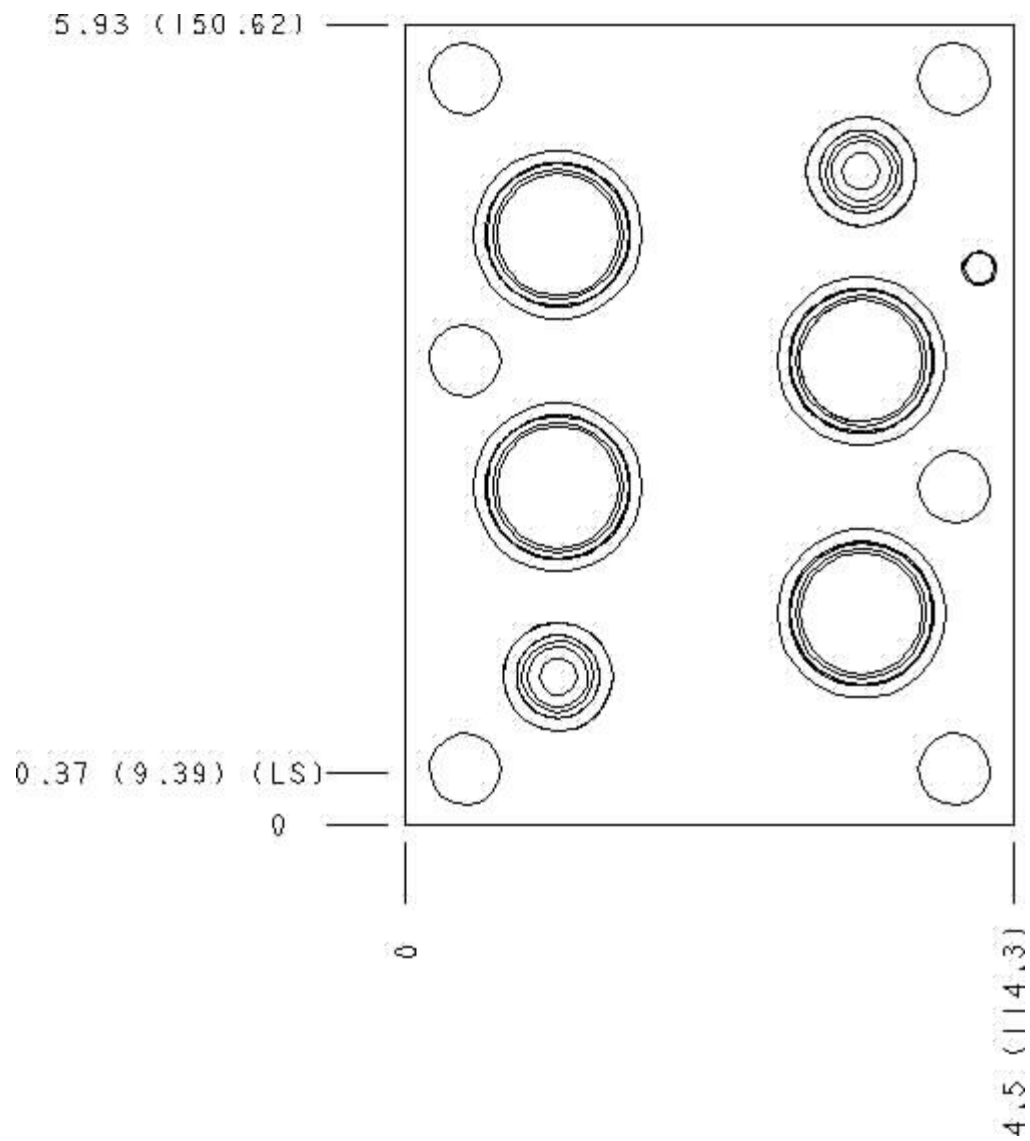
Cartridge extension measurement is to the centerline of the cartridge.



Functional Group:
Products : Manifolds : Sandwich : Relief : ISO 08 : P to T

Model:
CDP

Face : 7



Cartridge extension measurement is to the centerline of the cartridge.



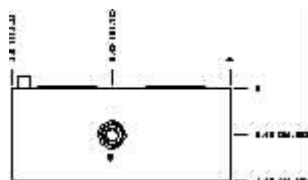
Functional Group:

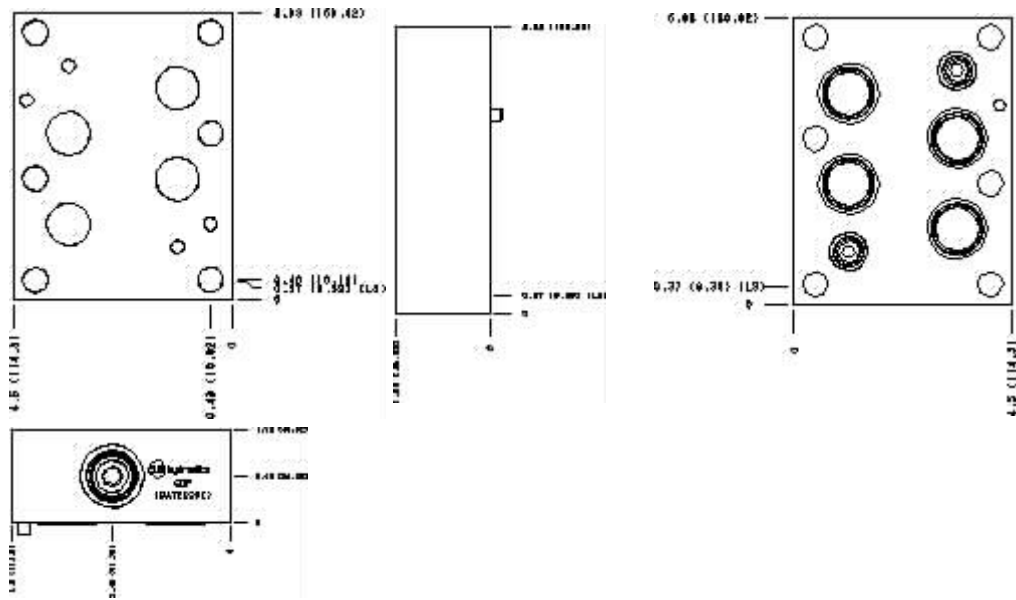
Products : Manifolds : Sandwich : Relief : ISO 08 : P to T

Model:
CDP

Projection Type 

All Dimensions in Inches(mm)





Copyright © 2007-2008 Sun Hydraulics Corporation.
All rights reserved.

[Terms and Conditions](#) - [Statement of Privacy](#)