

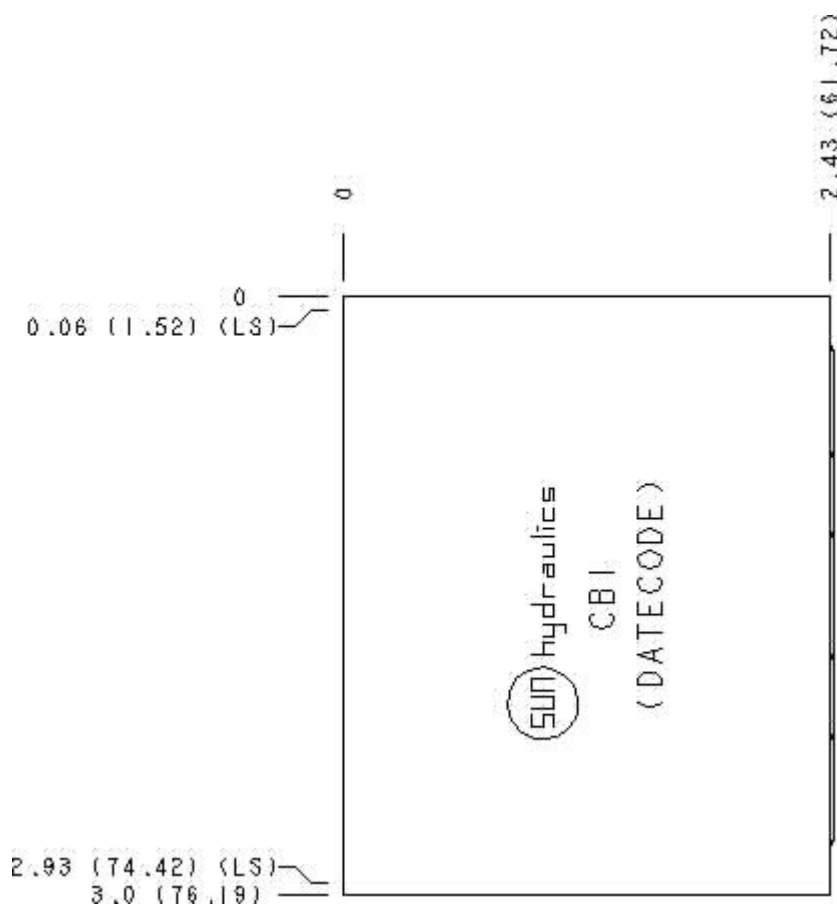
Functional Group:

Model:

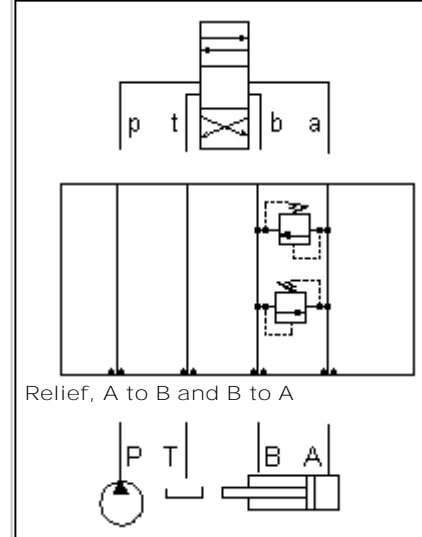
Products : Manifolds : Sandwich : Relief : ISO 05 : A to B and B to A

CBI

Face : 7



Function



Cartridge extension measurement is to the centerline of the cartridge.

Aluminum Body Pressure Rating: **3000 psi (210 bar)**

Ductile Iron Body Pressure Rating: **5000 psi (350 bar)**

Technical Data

	U.S. Units	Metric Units
Model Weight	1.44 lb.	0.65 kg.
Cavity	T-10A	
Body Features	A to B and B to A	
Body Type	Sandwich	
Interface	ISO 05	
Open Cavity Quantity	2	
Stack Height	2.44 in.	62 mm

Option Selection:

Model Code	Description
CBI	Aluminum, Buna-N, U.S. Units
CBI /S	Ductile Iron, Buna-N, U.S. Units
CBI /V	Aluminum, Viton, U.S. Units
CBI /Y	Ductile Iron, Viton, U.S. Units

Special Notes :

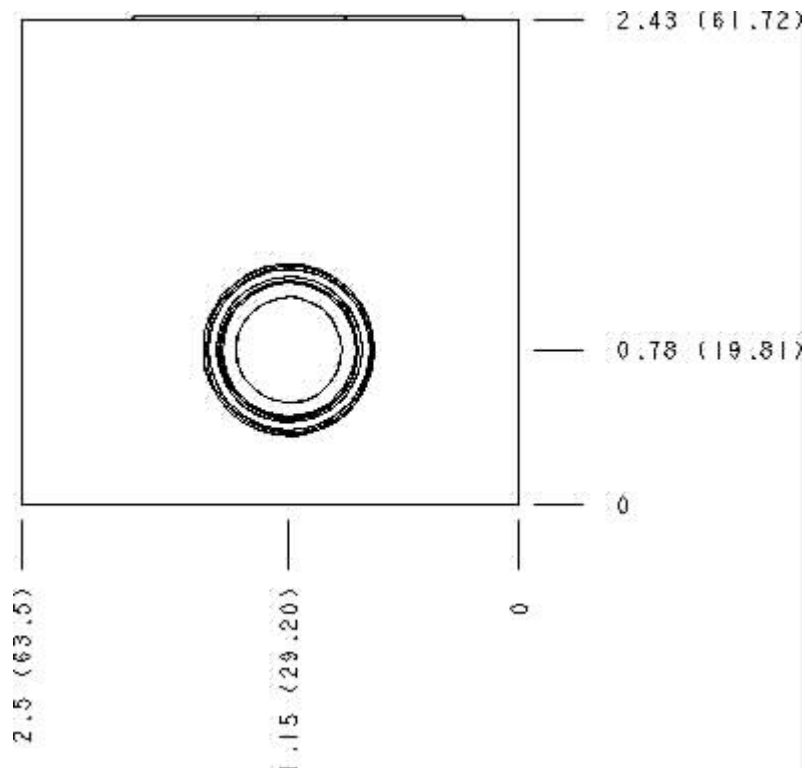
No Special Notes available for selected Model.



Functional Group:
Products : Manifolds : Sandwich : Relief : ISO 05 : A to B and B to A

Model:
CBI

Face : 2



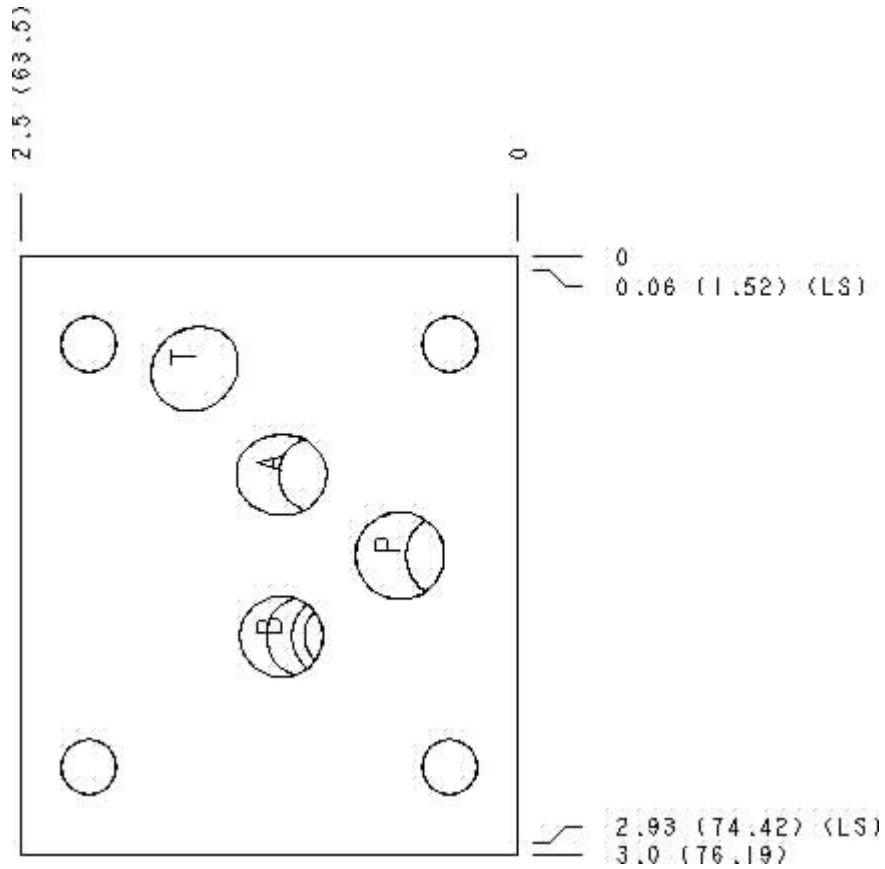
Cartridge extension measurement is to the centerline of the cartridge.



Functional Group:
Products : Manifolds : Sandwich : Relief : ISO 05 : A to B and B to A

Model:
CBI

Face : 6



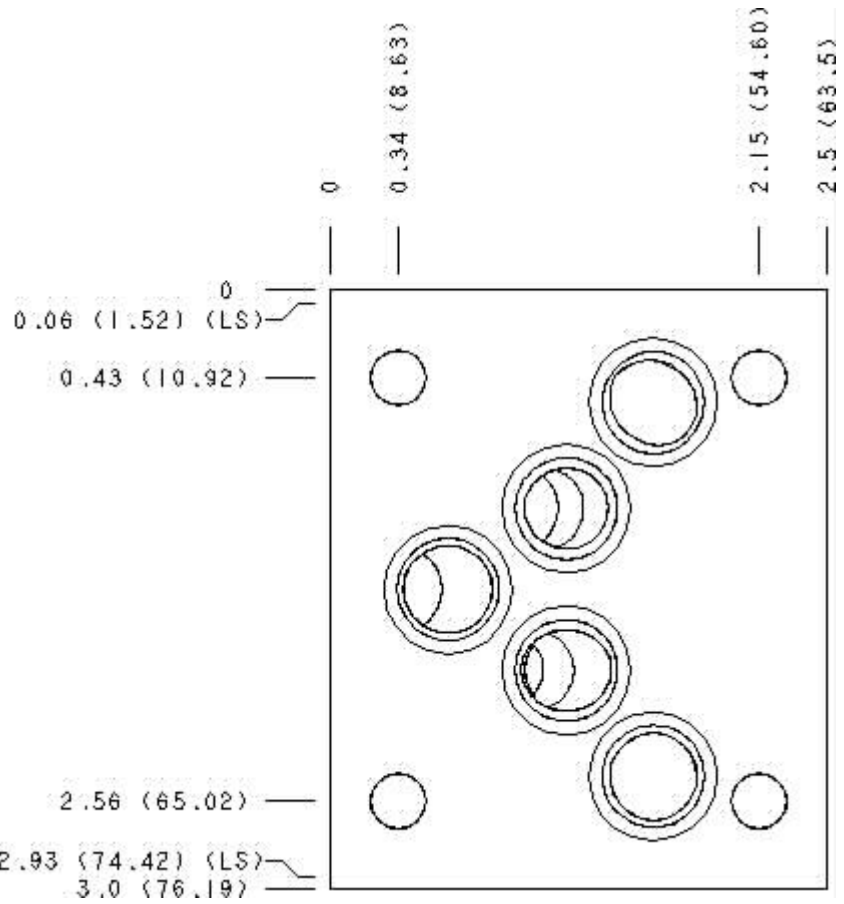
Cartridge extension measurement is to the centerline of the cartridge.



Functional Group:
Products : Manifolds : Sandwich : Relief : ISO 05 : A to B and B to A

Model:
CBI

Face : 8



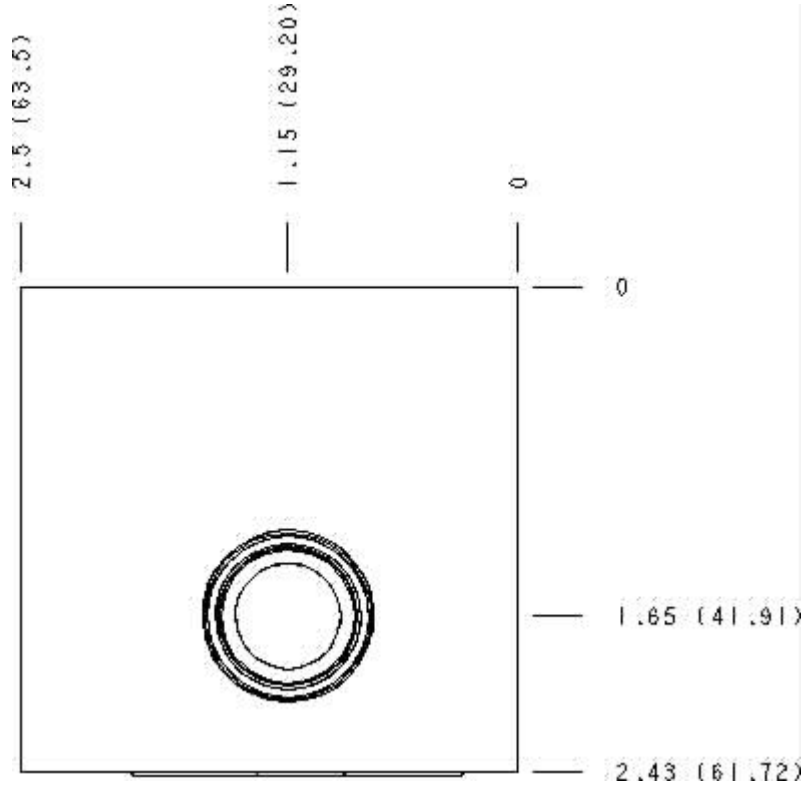
Cartridge extension measurement is to the centerline of the cartridge.



Functional Group:
 Products : Manifolds : Sandwich : Relief : ISO 05 : A to B and B to A

Model:
 CBI

Face : 10



Cartridge extension measurement is to the centerline of the cartridge.



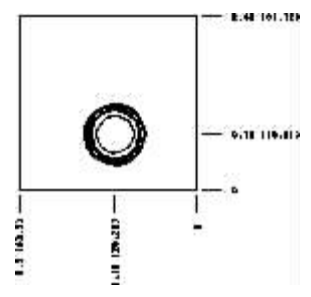
Functional Group:

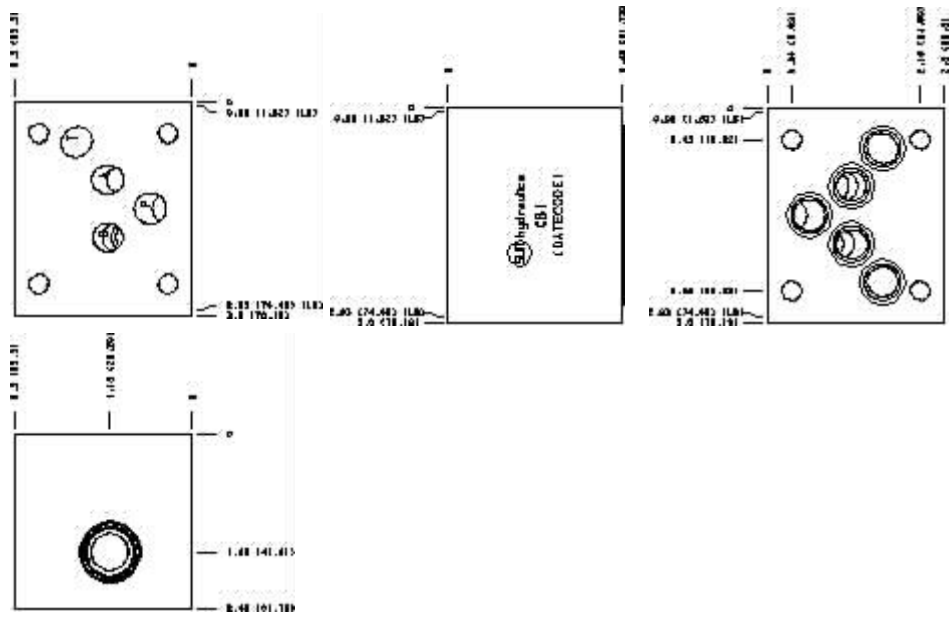
Products : Manifolds : Sandwich : Relief : ISO 05 : A to B and B to A

Model:
CBI

Projection Type

All Dimensions in Inches(mm)





Copyright © 2007-2008 Sun Hydraulics Corporation.
All rights reserved.

[Terms and Conditions](#) - [Statement of Privacy](#)