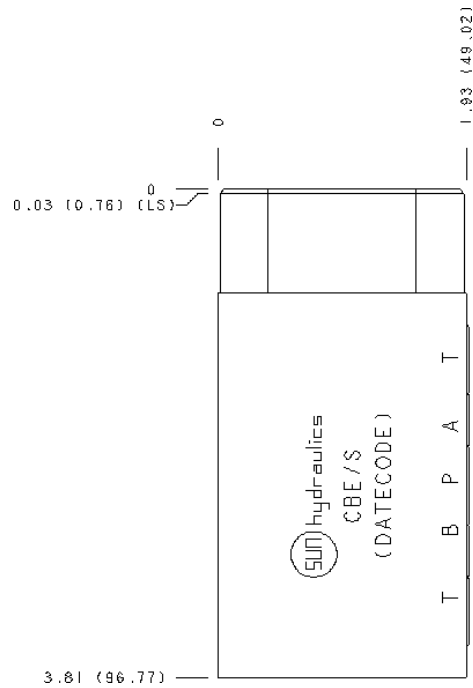
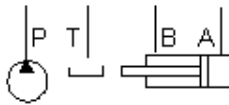


Relief, P to T



CONFIGURATION

/S Modifier 65-45-12 Ductile Iron, Buna-N, Blackened

TECHNICAL DATA

| | |
|---------------|-----------|
| Body Type | Sandwich |
| Interface | ISO 05 |
| Body Features | P to T |
| Stack Height | 1.94 in. |
| Open Cavities | 1 |
| Cavity | T-10A |
| Port Size | 1/4" NPTF |
| Model Weight | 3.91 lb. |

NOTES

Important: Carefully consider the maximum system pressure. The pressure rating of the manifold is dependent on the manifold material, with the port type/size a secondary consideration. Manifolds constructed of aluminum are not rated for pressures higher than 3000 psi (210 bar), regardless of the port type/size specified.

PORT DESIGNATORS

| Modifiers | Ports |
|-----------|---------------------------------|
| CBE, /V | Gage Port (Plugged): 1/4" NPTF; |
| CBE/M, /Z | Gage Port (Plugged): 1/4" BSPP; |

INCLUDED COMPONENTS

| Part | Description | Quantity |
|-------------|-------------|----------|
| 340-003 | Pipe Plug | 1 |
| 500-001-014 | O-Ring | 5 |

CONFIGURATION OPTIONS
Model Code Example: CBE/S

MODIFIER (/S)

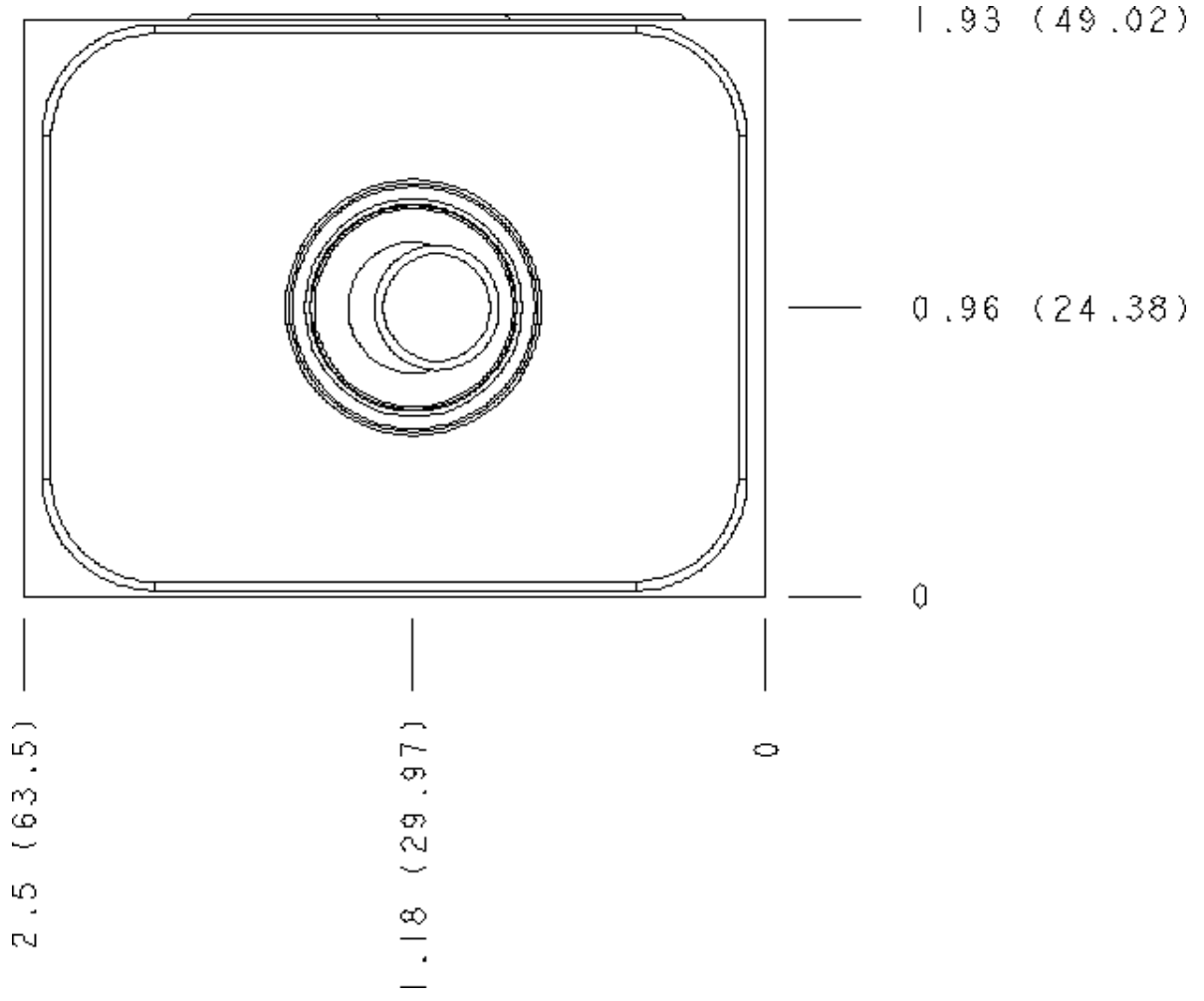
- /S** 65-45-12 Ductile Iron, Buna-N, Blackened
- 6061-T651 Aluminum, Buna-N
- /M** 6061-T651 Aluminum, Metric, Buna-N
- /T** 65-45-12 Ductile Iron, Metric, Buna-N, Blackened
- /V** 6061-T651 Aluminum, Viton
- /W** 65-45-12 Ductile Iron, Metric, Viton, Blackened
- /Y** 65-45-12 Ductile Iron, Viton, Blackened
- /Z** 6061-T651 Aluminum, Metric, Viton

MANIFOLD FACES

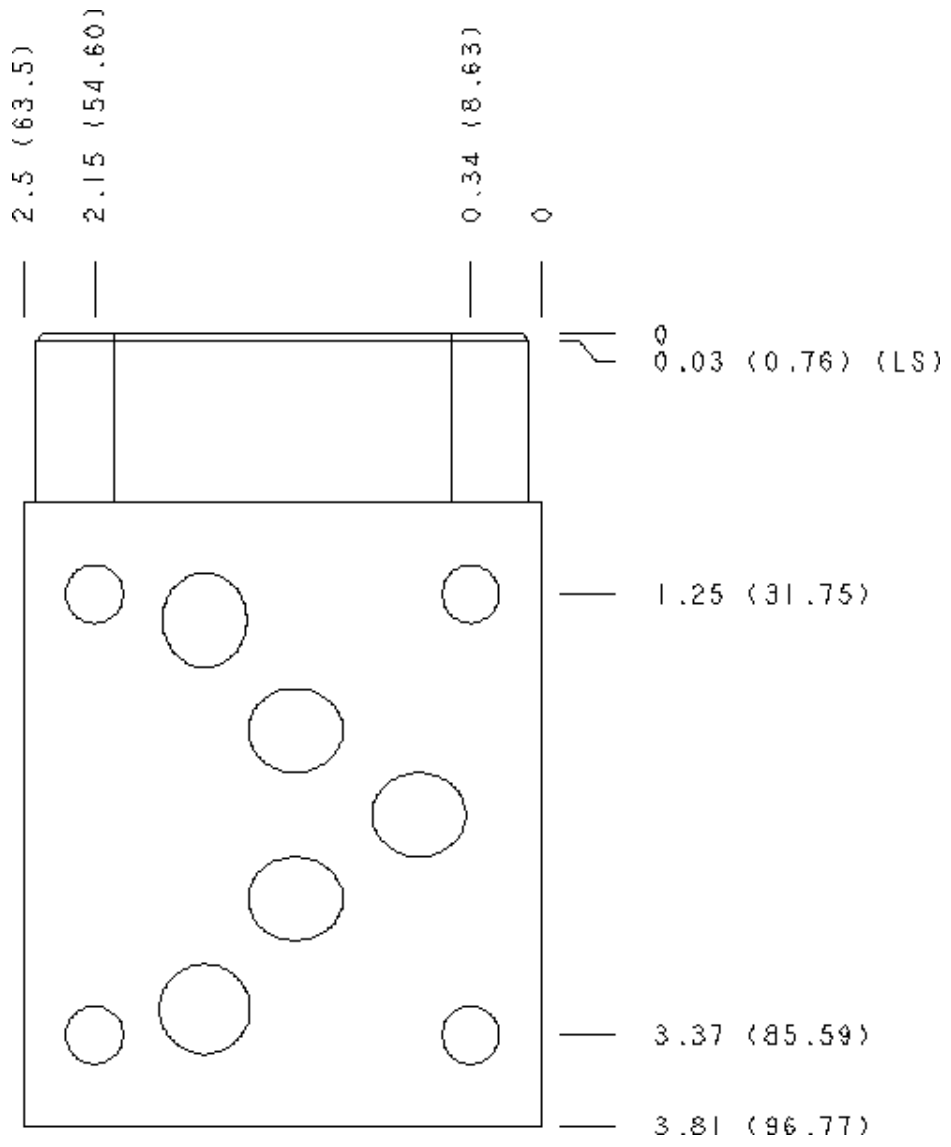
FACE GRID

| | | | |
|---|----|----|----|
| 1 | 2 | 3 | 4 |
| 5 | 6 | 7 | 8 |
| 9 | 10 | 11 | 12 |

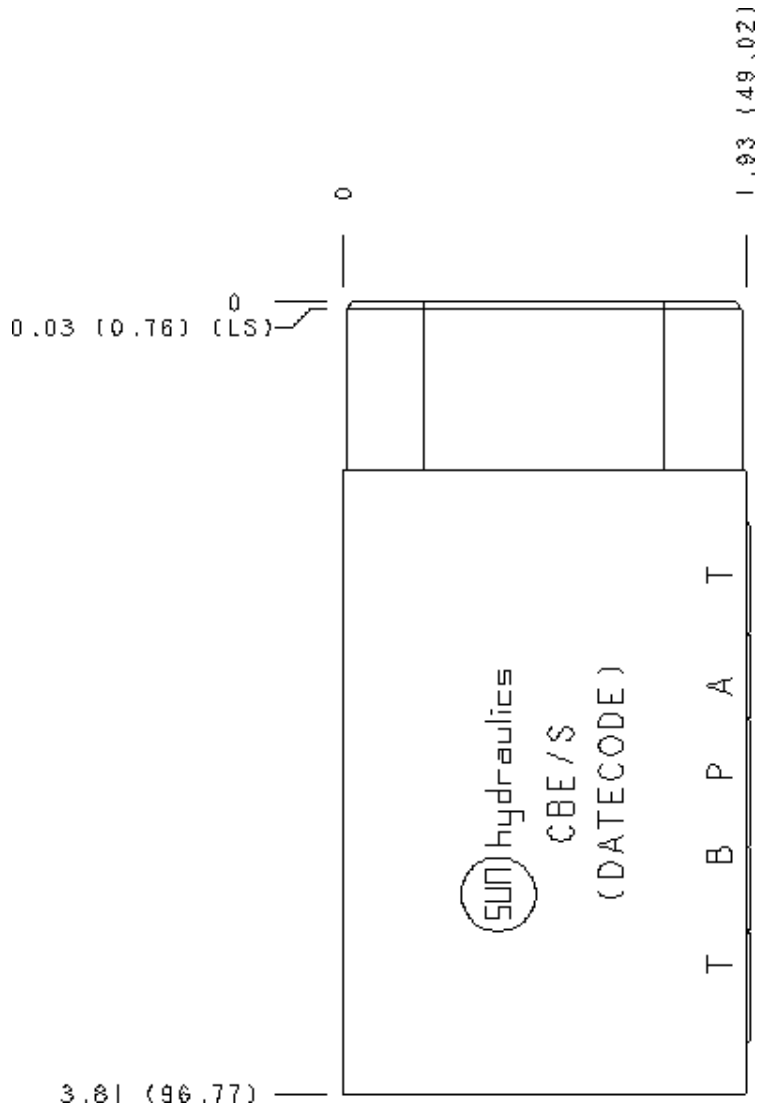
Face 2



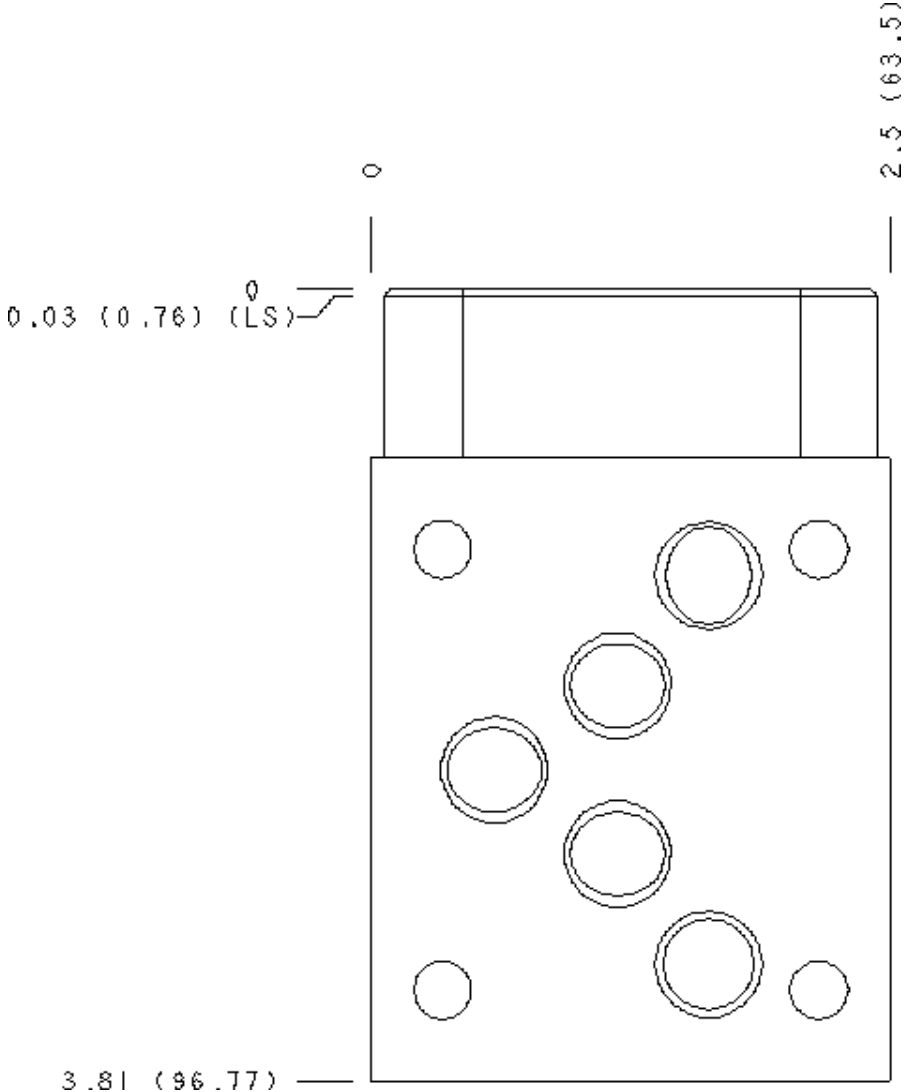
Face 6



Face 7



Face 8



Face 10

