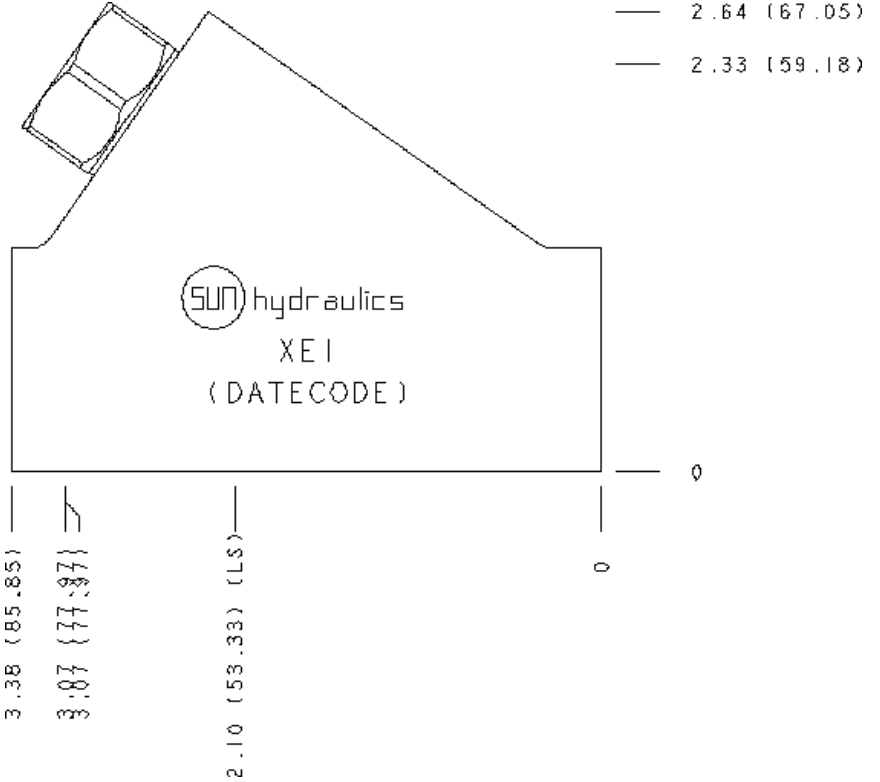
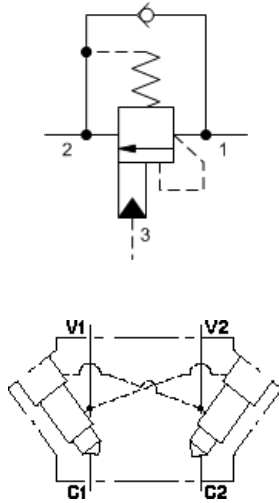


**MODEL**  
CBCGXVN-XEI

**Fixed setting, 4.5:1 pilot ratio, standard capacity counterbalance valve**  
**CAPACITY: 15 gpm | CAVITY: T-11A**



**CARTRIDGE CONFIGURATION**

<b>V</b>	Fixed Pressure Range	3200 - 3800 psi (220 - 260 bar)
<b>N</b>	Seal Material	Buna-N
<b>(none)</b>	Material/Coating	Standard Material/Coating

**MANIFOLD CONFIGURATION**

<b>(none)</b>	Modifier	6061-T651 Aluminum, Buna-N
---------------	----------	----------------------------

**PORT HEADINGS AND SIZES**

Modifiers	Ports
XEI, /10, /11, /S, /S3	All Ports: SAE 6;

**NOTES**

**Important:** Carefully consider the maximum system pressure. The pressure rating of the manifold is dependent on the manifold material, with the port type/size a secondary consideration. Manifolds constructed of aluminum are not rated for pressures higher than 3000 psi (210 bar), regardless of the port type/size specified.

Fixed-setting, 3-port counterbalance valves with pilot-assist function similarly to the adjustable versions except the fixed setting is pre-set to a nominal value. These fixed-setting valves are meant to control an overrunning load. The check valve allows free flow from the directional valve (port 2) to the load (port 1) while a direct-acting, pilot-assisted relief valve controls flow from port 1 to port 2. Pilot assist at port 3 lowers the effective setting of the relief valve at a rate determined by the pilot ratio.

Other names for this valve include motion control valve and over-center valve.

**CARTRIDGE TECHNICAL DATA**

Cavity	T-11A
Series	1
Capacity	15 gpm
Pilot Ratio	4.5:1
Factory Pressure Settings Established at	2 in <sup>3</sup> /min.
Maximum Valve Leakage at Reseat	5 drops/min.
Check Cracking Pressure	25 psi
Operating Characteristic	Standard
Valve Hex Size	7/8 in.
Valve Installation Torque	30 - 35 lbf ft
Seal kit - Cartridge	Buna: 990-011-007
Seal kit - Cartridge	Polyurethane: 990-011-002
Seal kit - Cartridge	Viton: 990-011-006

Model Weight	0.27 lb.
--------------	----------

---

**MANIFOLD TECHNICAL DATA**

Body Type	Line mount
Interface	None
Body Features	Inline, cross pilot
Mounting Hole Diameter	.34 in.
Mounting Hole Depth	Through
Mounting Hole Quantity	2
Open Cavities	2
Cavity	T-11A
Port Size	SAE 6
Model Weight	1.46 lb.

Copyright © 2002-2020 Sun Hydraulics. All rights reserved.