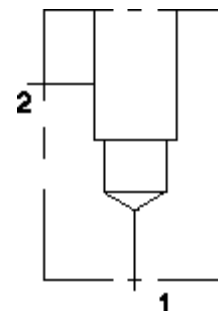


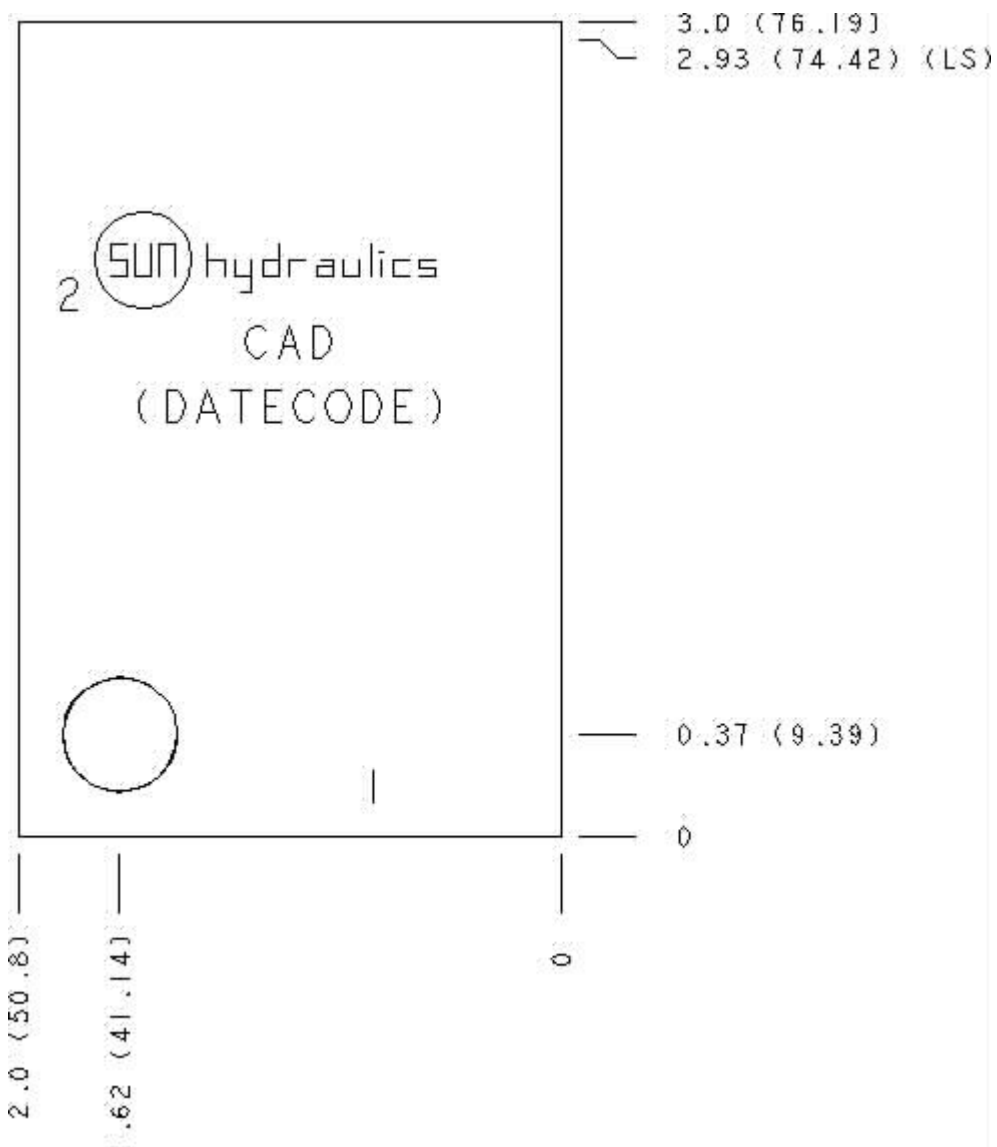
Functional Group:  
 Products : Manifolds : Line mount : Relief : 2 Port : Ninety degree

Model:  
 CAD

Aluminum Body Pressure Rating: 3000 psi (210 bar)  
 Ductile Iron Body Pressure Rating: 5000 psi (350 bar)



Face: 6



Cartridge extension measurement is to the centerline of the cartridge.

---

Port Headings and Sizes

CAD

Ports 1 & 2

3/4" NPTF

---

Technical Data

	U.S. Units	Metric Units
Model Weight	0.61 lb.	0.28 kg.
Cavity		T-3A
Body Features		Ninety degree
Body Type		Line mount
Interface		None
Open Cavity Quantity		1
Mounting Hole Diameter	.42 in.	10,7 mm
Mounting Hole Depth		Through
Mounting Hole Quantity		1

---

Option Selection

U.S. Dollar ▼

Model Code	Description
CAD	Aluminum, Buna-N, U.S. Units
CAD/S	Ductile Iron, Buna-N, U.S. Units

---

Special Notes

- No Special Notes Available for selected model.
- 
-