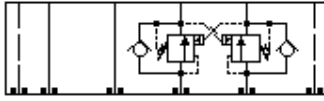
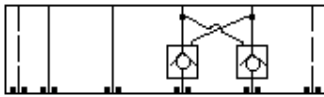


TECHNICAL DATA

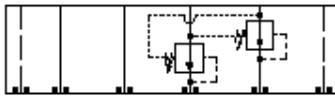
Body Type	Sandwich
Interface	ISO 07
Body Features	On A and B with cross pilot
Stack Height	2.74 in.
Seal Plate Included (see notes)	Yes
Open Cavities	2
Cavity	T-17A
Model Weight	13.46 lb.



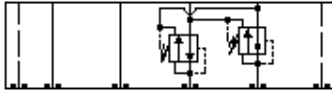
Counterbalance, On A and B, Cross-Piloted



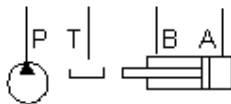
Pilot-To-Open Check, On A and B, Cross-Piloted



Reducing, On A and B, drain to opposite port



Reducing/Relieving, On A and B, Tanks and Drains to Opposite Port



CONFIGURATION

/S Modifier 65-45-12 Ductile Iron, Buna-N, Blackened

NOTES

- Stack height value in technical data table includes seal retainer plate.
- Important:** Carefully consider the maximum system pressure. The pressure rating of the manifold is dependent on the manifold material, with the port type/size a secondary consideration. Manifolds constructed of aluminum are not rated for pressures higher than 3000 psi (210 bar), regardless of the port type/size specified.

INCLUDED COMPONENTS

Part	Description	Quantity
500-001-111	O-Ring	2
500-001-118	O-Ring	4
700-006	Seal Plate	1
811-001-006	Pin	2

CONFIGURATION OPTIONS
Model Code Example: BKY/S

MODIFIER **(/S)**

/S 65-45-12 Ductile Iron, Buna-N, Blackened

6061-T651 Aluminum, Buna-N

/V 6061-T651 Aluminum, Viton

/Y 65-45-12 Ductile Iron, Viton, Blackened

