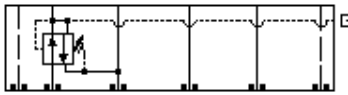
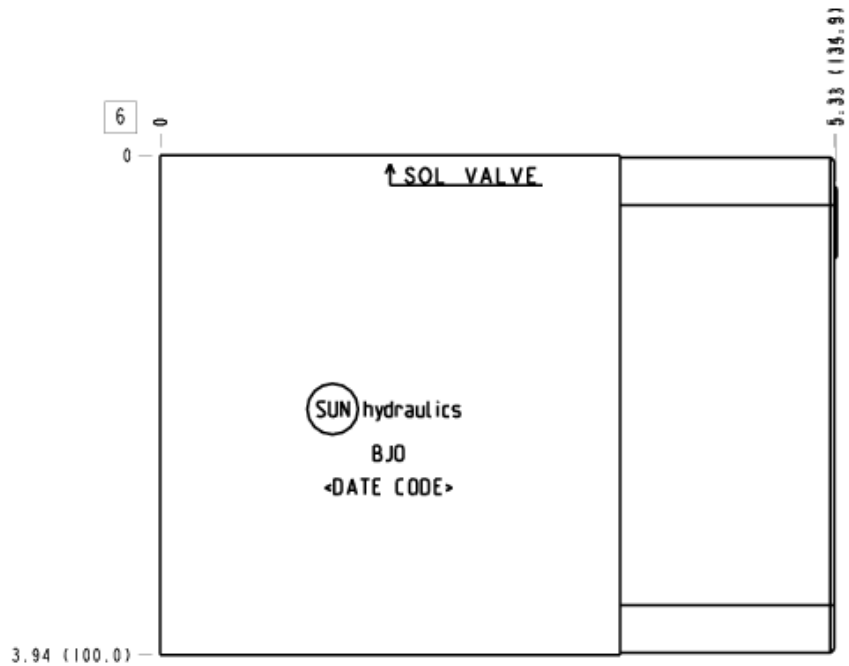
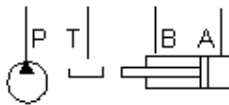


Reducing, On P, Drained to T



Reducing/Relieving, On P Tank to T, Drained to T



**TECHNICAL DATA**

Body Type	Sandwich
Interface	ISO 05 - X&Y
Body Features	On P, port 3 to T
Stack Height	3.99 in.
Seal Plate Included (see notes)	No
Open Cavities	1
Cavity	T-17A
Port Size	1/4" NPTF
Model Weight	4.18 lb.

**NOTES**

- Stack height value in technical data table includes seal retainer plate.
- This installation requires a retainer and seal kit which are purchased separately. See "Related Accessories" section.
- **Important:** Carefully consider the maximum system pressure. The pressure rating of the manifold is dependent on the manifold material, with the port type/size a secondary consideration. Manifolds constructed of aluminum are not rated for pressures higher than 3000 psi (210 bar), regardless of the port type/size specified.

## PORT DESIGNATORS

Modifiers	Ports
BJO, /10, /11, /15, /16, /V	Gage Port (Plugged): 1/4" NPTF;
BJO/1A, /1B, /1F, /1G, /M, /Z	Gage Port (Plugged): 1/4" BSPP;

## INCLUDED COMPONENTS

Part	Description	Quantity
340-003	Pipe Plug	1
A330-006-004	SAE Plug	1

## CONFIGURATION OPTIONS

Model Code Example: BJO

### MODIFIER

6061-T651 Aluminum, Buna-N

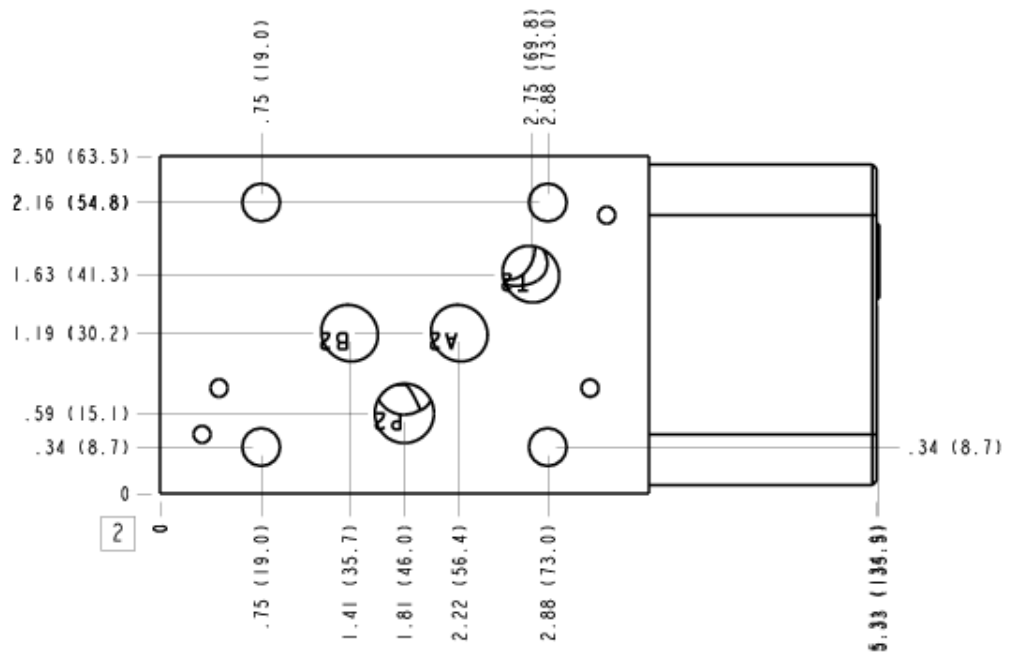
- /11** 6061-T651 Aluminum, Buna-N, Clear Anodize - Per MIL SPEC 8625F Type II, Class I
- /10** 6061-T651 Aluminum, Buna-N, Black Anodize - Per MIL SPEC 8625F Type II, Class II
- /V** 6061-T651 Aluminum, Viton
- /16** 6061-T651 Aluminum, Viton, Clear Anodize - Per MIL SPEC 8625F Type II, Class I
- /15** 6061-T651 Aluminum, Viton, Black Anodize - Per MIL SPEC 8625F Type II, Class II
- /M** 6061-T651 Aluminum, Metric, Buna-N
- /1B** 6061-T651 Aluminum, Metric, Buna-N, Clear Anodize - Per MIL SPEC 8625F Type II, Class I
- /1A** 6061-T651 Aluminum, Metric, Buna-N, Black Anodize - Per MIL SPEC 8625F Type II, Class II
- /Z** 6061-T651 Aluminum, Metric, Viton
- /1G** 6061-T651 Aluminum, Metric, Viton, Clear Anodize - Per MIL SPEC 8625F Type II, Class I
- /1F** 6061-T651 Aluminum, Metric, Viton, Black Anodize - Per MIL SPEC 8625F Type II, Class II
- /S** 65-45-12 Ductile Iron, Buna-N, Chem. Black
- /S3** 65-45-12 Ductile Iron, Buna-N, Trivalent Clear Zinc with Top Sealer
- /Y** 65-45-12 Ductile Iron, Viton, Chem. Black
- /Y3** 65-45-12 Ductile Iron, Viton, Trivalent Clear Zinc with Top Sealer
- /T** 65-45-12 Ductile Iron, Metric, Buna-N, Chem. Black
- /T3** 65-45-12 Ductile Iron, Metric, Buna-N, Trivalent Clear Zinc with Top Sealer
- /W** 65-45-12 Ductile Iron, Metric, Viton, Chem. Black
- /W3** 65-45-12 Ductile Iron, Metric, Viton, Trivalent Clear Zinc with Top Sealer

## MANIFOLD FACES

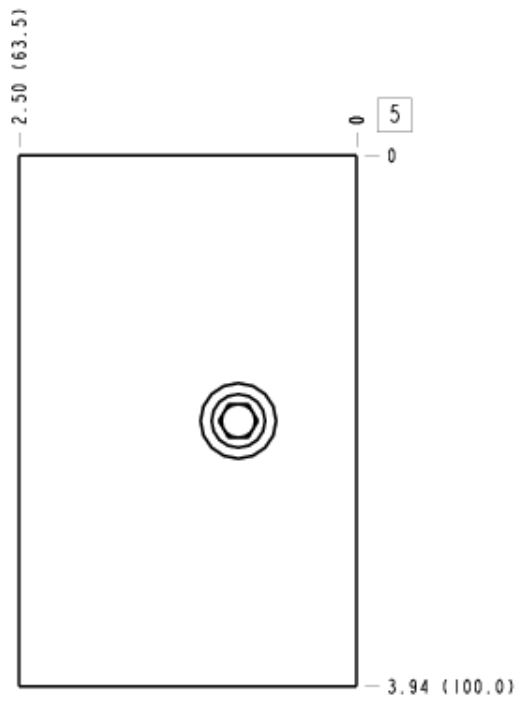
### FACE GRID

1	2	3	4
5	6	7	8
9	10	11	12

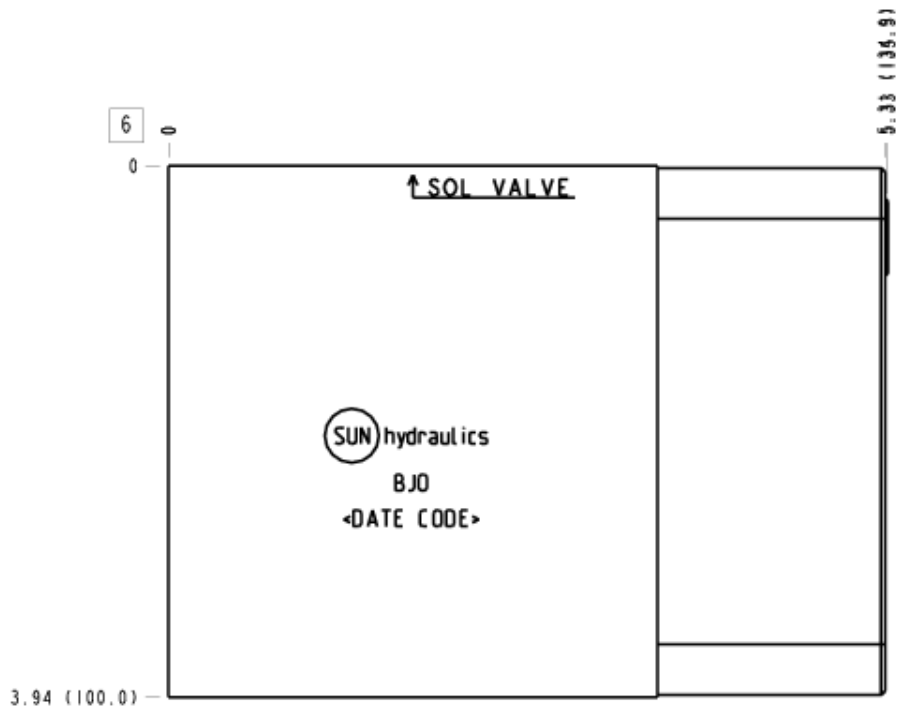
## Face 2



## Face 5



# Face 6



# Face 7

