

**CONFIGURATION**

/S Modifier 65-45-12 Ductile Iron, Buna-N, Chem. Black

**TECHNICAL DATA**

Body Type	Line mount
Interface	None
Body Features	Through port 1 with gauge port
Mounting Hole Thread	.250-20 UNC - 2B in.
Mounting Hole Depth	.50 in.
Mounting Hole Quantity	2
Open Cavities	1
Cavity	T-162A
Port Size	SAE 8
Model Weight	1.66 lb.

**NOTES** *Important:* Carefully consider the maximum system pressure. The pressure rating of the manifold is dependent on the manifold material, with the port type/size a secondary consideration. Manifolds constructed of aluminum are not rated for pressures higher than 3000 psi (210 bar), regardless of the port type/size specified.

**PORT DESIGNATORS**

Modifiers	Ports
AEJ, /10, /11	Ports 1 & 2: SAE 8; Gage Port: 1/4" NPTF;

**CONFIGURATION OPTIONS**

**Model Code Example: AEJ/S**

**MODIFIER** (S)

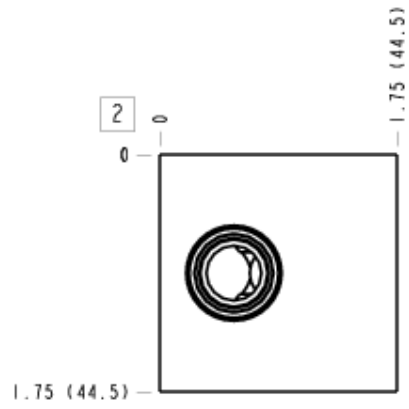
- /S** 65-45-12 Ductile Iron, Buna-N, Chem. Black
- 6061-T651 Aluminum, Buna-N
- /11** 6061-T651 Aluminum, Buna-N, Clear Anodize - Per MIL SPEC 8625F Type II, Class I
- /10** 6061-T651 Aluminum, Buna-N, Black Anodize - Per MIL SPEC 8625F Type II, Class II
- /S3** 65-45-12 Ductile Iron, Buna-N, Trivalent Clear Zinc with Top Sealer

**MANIFOLD FACES**

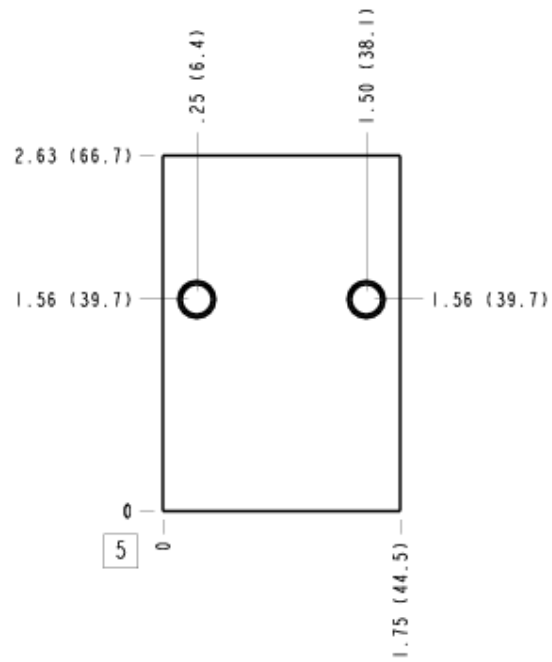
**FACE GRID**

1	2	3	4
5	6	7	8
9	10	11	12

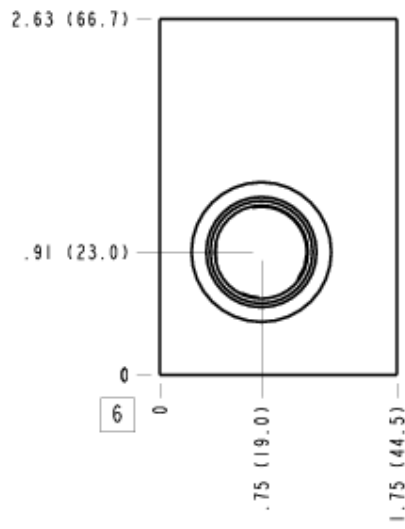
### Face 2



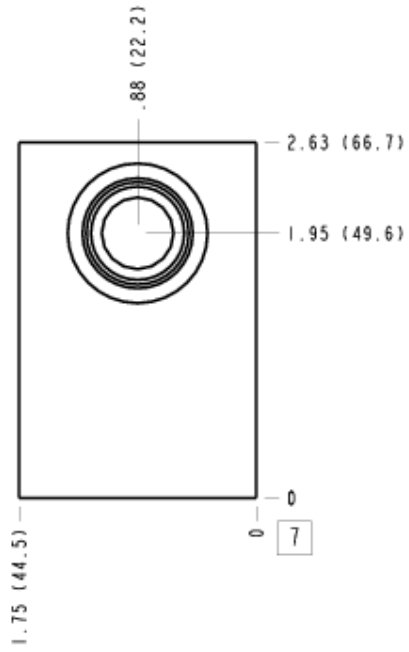
### Face 5



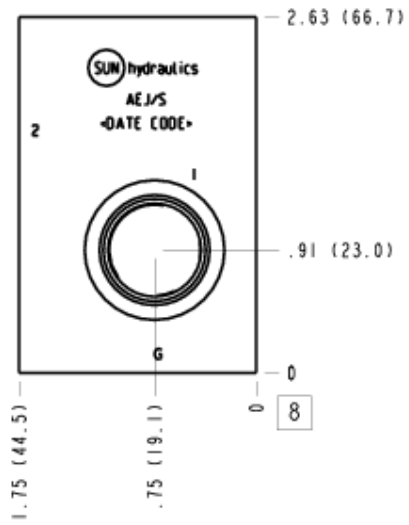
### Face 6



### Face 7



### Face 8



### Face 10

