

TECHNICAL DATA

Body Type	Line mount
Interface	None
Body Features	Through port 1 with gauge port
Mounting Hole Thread	.250-20 UNC - 2B in.
Mounting Hole Depth	.50 in.
Mounting Hole Quantity	2
Open Cavities	1
Cavity	T-162A
Port Size	SAE 6
Model Weight	0.45 lb.

NOTES

Important: Carefully consider the maximum system pressure. The pressure rating of the manifold is dependent on the manifold material, with the port type/size a secondary consideration. Manifolds constructed of aluminum are not rated for pressures higher than 3000 psi (210 bar), regardless of the port type/size specified.

PORT DESIGNATORS

Modifiers	Ports
AEI	Ports 1 & 2: SAE 6; Gage Port: 1/4" NPTF;

CONFIGURATION OPTIONS

Model Code Example: AEI

MODIFIER

- 6061-T651 Aluminum, Buna-N
- /S 65-45-12 Ductile Iron, Buna-N, Blackened

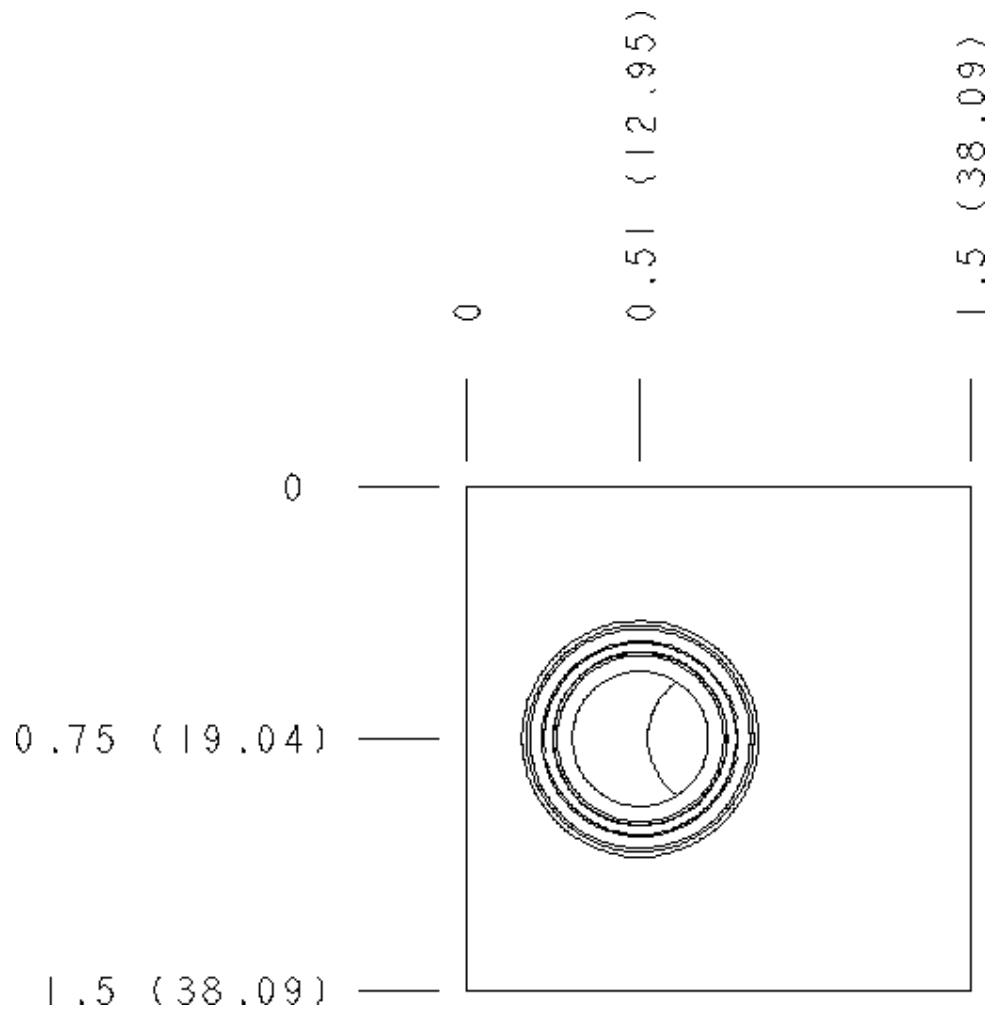
MANIFOLD FACES

FACE GRID

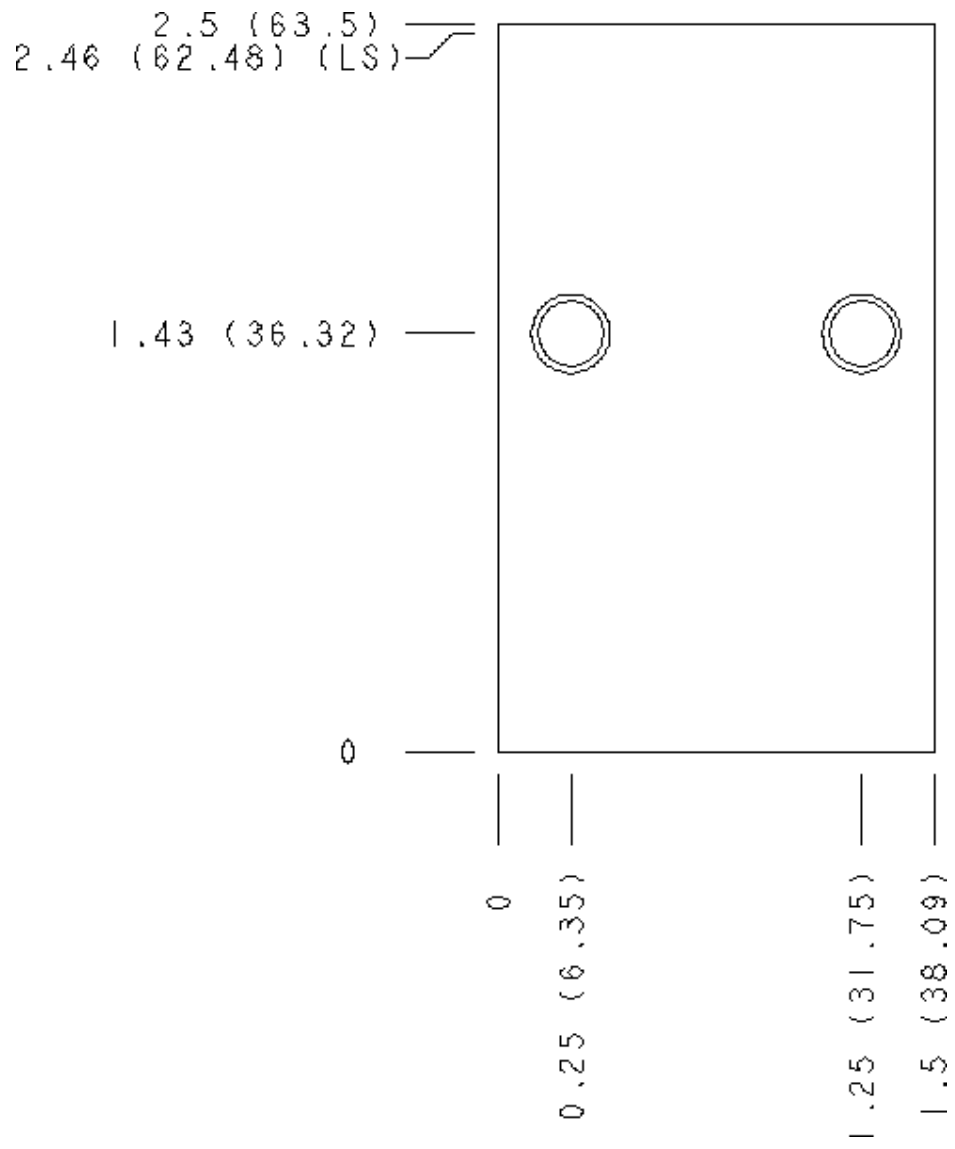


5	6	7	8
9	10	11	12

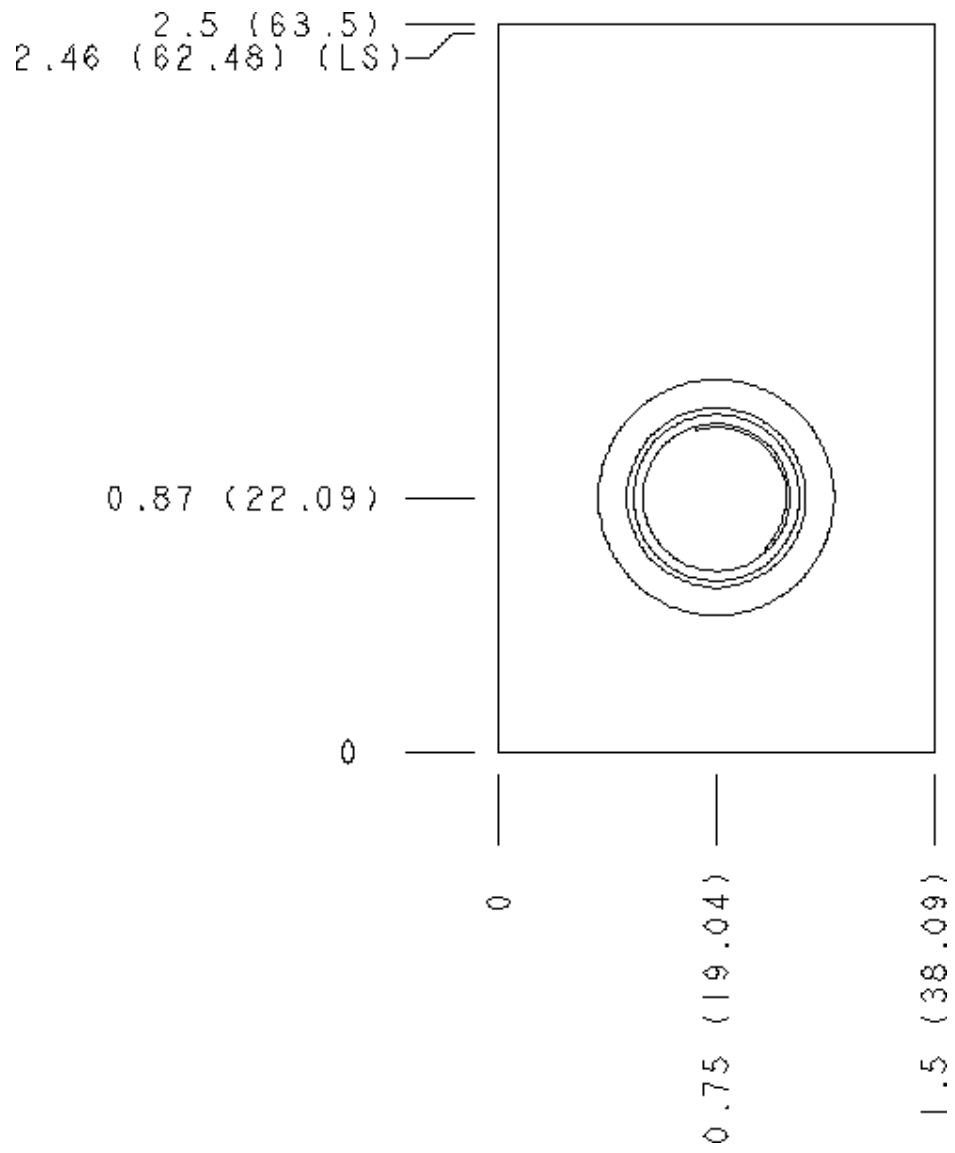
Face 2



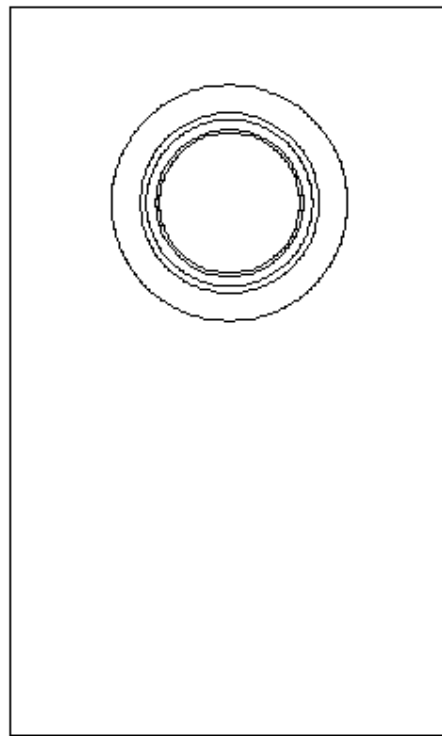
Face 5



Face 6



Face 7



2.5 (63.5)
2.46 (62.48) (LS)

1.82 (46.22)

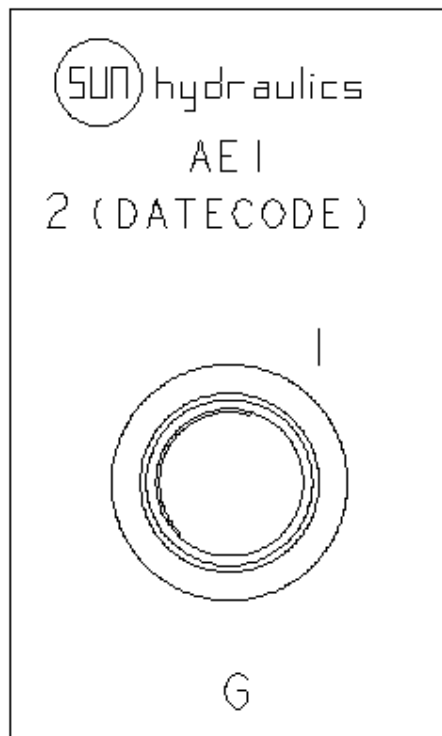
0

1.5 (38.09)

0.75 (19.04)

0

Face 8



2.5 (63.5)
2.46 (62.48) (LS)

0.87 (22.09)

0

1.5 (38.09)

0.75 (19.04)

0

Face 10

