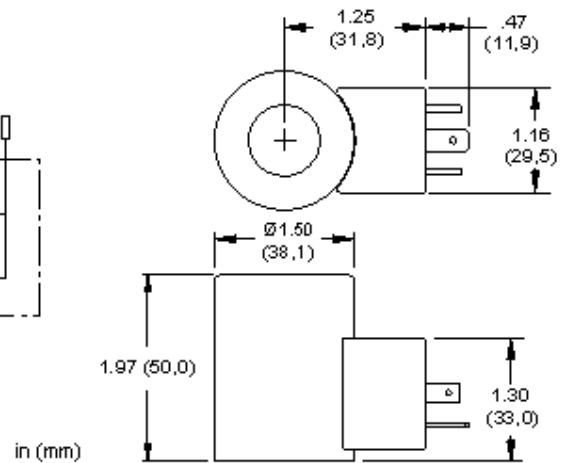


DC COIL



### TECHNICAL DATA

Maximum Coil Temperature at 68°F (20°C) Ambient	218°F (105°C)
Arc Suppression (TVS)	Included
Nominal Coil Resistance at 68°F (20°C) Cold	720 ±5% ohms
Power Consumption (cold) - at rated voltage	22 watts
Maximum Ambient Temperature	122 °F
Voltage/Frequency	127 VDC
Operating Voltage Range	+/- 10% nominal
Duty Cycle Rating	100 %
Connector	ISO4400 - EN/DIN175301-803, Form A (ISO/DIN 43650) 3-pin
Connector Environment Rating	IP65/IP67
Solenoid Tube Diameter	.75 in.
Coil Nut Torque	4.5 lbf in.
Model Weight	0.51 lb.

### USED WITH

DAAL	DAALS	DBAL	DBALS	DFCA	DFCB	DFDA	DFDB	DFEA	DFEB
DFFA	DFFB	DLDA	DLDAS	DMDA	DMDAS	DNCA	DNDA	DNDAS	DNDC
DNDY	DNDYS	DTCA	DTDAS	DWDA	HDDA				

### TECHNICAL FEATURES

- Coil windings utilize Class N, (392° F [200 °C] rated) magnet wire.
- A TVS surge suppression diode is built into DC coils. Nominal breakdown voltage; 250V. Model code 1.5 KE250CA. Steady state power dissipation @ 75°C is 6.5 W and peak pulse dissipation is 1500 W for 1 ms, nonrepetitive.
- Power cable with mating connector is required and is not included with product.
- This coil is CE compliant. It meets the requirements of the Low Voltage Directive (2006/95/EC) and EN 60204-1:2006.
- The coil is magnetically symmetrical and can be mounted in either direction on the solenoid tube without affecting performance.
- IP rating is dependent on the coil connector and the mating connector used.
- RoHS compliant. Restricted materials less than 0.1% total by weight.
- The external steel shell is plated with clear zinc trivalent.