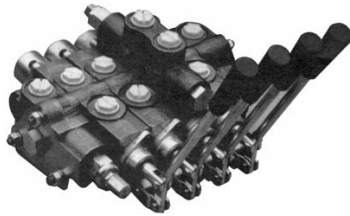


Model SV



SPECIFICATIONS:

Parallel or Series Circuit Construction

Pressure Rating:
 Maximum Operation Pressure 3000 PSI
 Maximum Tank Pressure 500 PSI
 Nominal Flow Rating 12 GPM
 Refer to Pressure Drop Curves

Maximum Operating Temperature 180°

Foot Mounting Weight Per Section
 Inlet Section Approx. 3.75 lbs.
 Outlet Section Approx. 3.75 lbs.
 Work Section (Standard) Approx. 5.50 lbs.
 Work Section (High) Approx. 8.00 lbs.

Filtration: Fluid cleanliness should meet the ISO 4406 17/14 level. As a minimum, 10 micron filtration is recommended.

SVI15 Inlet



SVE11 Outlet



SVW1BA1 Work Section



SERIES SV

Part Number	Our Sequence Number	Per Each
-------------	---------------------	----------

INLET SECTIONS All have both top and side inlet ports

No relief - Port size #10 SAE ORB (7/8-14 Thread)	SVI21	178202	\$61.64
Adjustable low pressure relief set at 1000 PSI - Port size #10 SAE ORB (7/8-14 Thread)	SVI24	178204	76.89
Adjustable high pressure relief set at 2000 PSI - Port size #8 SAE ORB (3/4-16 Thread)	SVI15	178206	76.89
Adjustable high pressure relief set at 2000 PSI - Port size #10 SAE ORB (7/8-14 Thread)	SVI25	178208	76.89

WORK SECTION All have #8 SAE ORB (3/4-16 thd) ports, load check and standard lever handle

3-Way Single Acting w/ Spring Center	SVW1AA1	178210	119.57
4-Way Double Acting w/ Spring Center (Work Ports Blocked in Neutral)	SVW1BA1	178212	113.42
4-Way Double Acting w/ 3 Position Detent (Work Ports Blocked in Neutral)	SVW1BB1	178214	135.34
4-Way Motor Spool w/ Spring Center (Work Ports Open to Tank in Neutral)	SVW1CA1	178216	123.70
4-Way Motor Spool w/ 3 Position Detent (Work Ports Open to Tank in Neutral)	SVW1CB1	178218	145.62
4-Way 4 Position Float w/ Spring Center and Float Detent	SVW1DD1	178220	157.48
4-Way Spool w/ Spring Center (with Pilot Operated Checks on Both Work Ports)	SVL1CA1	178222	218.90
4-Way Meter Spool w/ Spring Center (Work Ports Blocked in Neutral)	SVM1ES1	178224	130.05

OUTLET SECTION All have both top and side outlet ports

Open Center Outlet w/ Conversion Plug - Port size #8 SAE ORB (3/4-16 Thread)	SVE11	178226	51.36
Open Center Outlet w/ Conversion Plug - Port size #10 SAE ORB (7/8-14 Thread)	SVE21	178228	51.36
Power Beyond Outlet w/ #8 SAE Beyond Port - Port size #10 SAE ORB (7/8-14 Thread)	SVE22	178230	62.59
Closed Center Outlet - Port size #10 SAE ORB (7/8-14 Thread)	SVE23	178232	60.37
Open Center Outlet Pressure Build-up Valve - Port size #10 SAE ORB (7/8-14 Thread)	SVE26	178234	91.50
Power Beyond Pressure Build-up Valve - Port size #10 SAE ORB (7/8-14 Thread)	SVE27	178236	83.35

TIE ROD KITS (Torque 150 in-lbs ± 6 in-lbs or 12-1/2 ft-lbs ± 1/2)

One Work Section	660401001	178238	15.06
Two Work Sections	660401002	178240	15.22
Three Work Sections	660401003	178242	15.69
Four Work Sections	660401004	178244	16.16
Five Work Sections	660401005	178246	16.63
Six Work Sections	660401006	178248	16.79
Seven Work Sections	660401007	178250	17.10
Eight Work Sections	660401008	178252	18.36
Nine Work Sections	660401009	178254	18.83
Ten Work Sections	660401010	178256	19.30

SPOOL ATTACHMENT KITS

Spring Center Kit	660180001	178258	17.42
3 Position Detent Kit	660180002	178260	65.11
Friction Detent Kit	660180003	178262	65.11
Float Detent kit	660180051	178264	82.53

HANDLE KITS

Standard Handle Kit	660180011	178266	17.42
Clevis Sub-Assembly	660180032	178268	12.87
Complete Handle Kit	660180005	178270	33.73
Pin Kit	660180031	178272	8.79

SEAL KITS

SVW/SVM Replacement Seal Kit	660580001	178274	9.73
Inlet Seal Kit	660580002	178276	8.63
Outlet Seal Kit	660580003	178278	5.33
Between Section Seal Kit	660580004	178280	3.61

INLET RELIEFS

Inlet Relief Plug	660250006	178282	24.48
Low Pressure Inlet Relief	660250003	178284	56.95
High Pressure Inlet Relief	660250002	178286	56.95

OUTLET CARTRIDGES

Open Center Plug	200400030	178288	6.59
#8 SAE Power Beyond Cart	660280001	178290	35.46
Closed Center Plug	660280002	178292	23.85