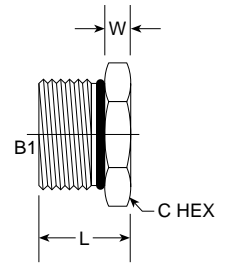


Tube Fittings & Adapters

MORB External Hex Plug 6408-O Series

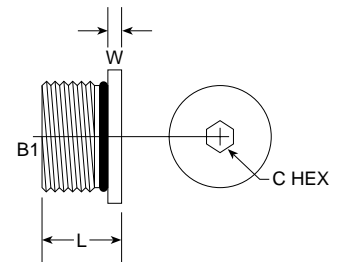
SAE# 090109A



PART NO. SIZE	TUBE O.D.	B1 SAE ORB	L LGTH	M.M.	W WIDTH	C HEX	C HEX	M.M.	Standard Material From Stock			
									S	FG	SS	B
6408-02-O	1/8	5/16-24	0.600	15.24	0.300	7/16	0.438	11.13	•		•	
6408-03-O	3/16	3/8-24	0.600	15.24	0.300	1/2	0.500	12.70	•		•	
6408-04-O	1/4	7/16-20	0.670	17.02	0.280	9/16	0.562	14.27	•		•	
6408-05-O	5/16	1/2-20	0.670	17.02	0.280	5/8	0.625	15.88	•		•	
6408-06-O	3/8	9/16-18	0.730	18.54	0.310	11/16	0.687	17.45	•		•	
6408-08-O	1/2	3/4-16	0.800	20.32	0.340	7/8	0.875	22.23	•		•	
6408-10-O	5/8	7/8-14	0.940	23.88	0.410	1	1.000	25.40	•		•	
6408-12-O	3/4	1 1/16-12	1.090	27.69	0.470	1 1/4	1.250	31.75	•		•	
6408-14-O	7/8	1 3/16-12	1.090	27.69	0.470	1 3/8	1.375	34.93	•		•	
6408-16-O	1	1 5/16-12	1.130	28.70	0.500	1 1/2	1.500	38.10	•		•	
6408-20-O	1 1/4	1 5/8-12	1.200	30.48	0.580	1 7/8	1.875	47.63	•		•	
6408-24-O	1 1/2	1 7/8-12	1.270	32.26	0.650	2 1/8	2.125	53.98	•		•	
6408-32-O	2	2 1/2-12	1.440	36.58	0.810	2 3/4	2.750	69.85	•		•	

MORB Hollow Hex Plug 6408-H-O Series

SAE# 090109B



PART NO. SIZE	TUBE O.D.	B1 SAE ORB	L LGTH	M.M.	W WIDTH	C HEX	C HEX	M.M.	Standard Material From Stock			
									S	FG	SS	B
6408-H-02-O	1/8	5/16-24	0.380	9.65	0.108	1/8	0.125	3.18	•		•	
6408-H-03-O	3/16	3/8-24	0.380	9.65	0.108	1/8	0.125	3.18	•		•	
6408-H-04-O	1/4	7/16-20	0.450	11.43	0.115	3/16	0.188	4.76	•		•	
6408-H-05-O	5/16	1/2-20	0.450	11.43	0.115	3/16	0.188	4.76	•		•	
6408-H-06-O	3/8	9/16-18	0.490	12.45	0.115	1/4	0.250	6.35	•		•	
6408-H-08-O	1/2	3/4-16	0.560	14.22	0.147	5/16	0.312	7.92	•		•	
6408-H-10-O	5/8	7/8-14	0.630	16.00	0.155	3/8	0.375	9.53	•		•	
6408-H-12-O	3/4	1 1/16-12	0.760	19.30	0.181	9/16	0.562	14.27	•		•	
6408-H-14-O	7/8	1 3/16-12	0.760	19.30	0.181	9/16	0.562	14.27	•		•	
6408-H-16-O	1	1 5/16-12	0.760	19.30	0.181	7/8	0.875	22.23	•		•	
6408-H-20-O	1 5/8	1 5/8-12	0.760	19.30	0.181	3/4	0.750	19.05	•		•	
6408-H-24-O	1 1/2	1 7/8-12	0.760	19.30	0.181	3/4	0.750	19.05	•		•	
6408-H-32-O	2	2 1/2-12	0.760	19.30	0.181	3/4	0.750	19.05	•		•	