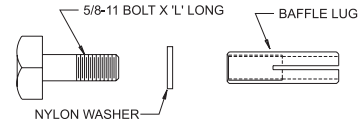
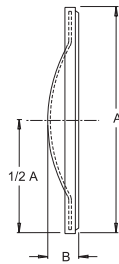
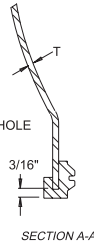
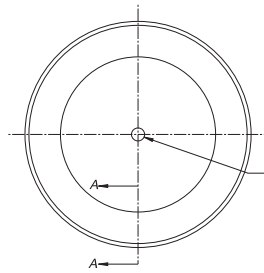




END COVERS

Steel/Stainless Endcovers



End Cover Size	*Endcover Kit without Drain Part No.	*Endcover Kit with 3/4" NPT Drain Part No.	+Endcover Only without Drain Part No.	+Endcover Only with Drain Part No.	*Endcover Kit with #12 SAE Drain Part No.	+Endcover Only with #12 SAE Drain Part No.
STEEL ENDCOVERS						
10"	5067	5068	5070	5072	5053-D	5053
12"	5080	5080-D	5085	5086-D	5054-D	5054
14"	5065	5066	5071	5073	5055-D	5055
16"	5087	5087-D	5089	5090-D	5056-D	5056
18"	5091	5091-D	5095	5094-D	5057-D	5057

End Cover Size	*Endcover Kit without Drain Part No.	*Endcover Kit with 3/4" NPT Drain Part No.	+Endcover Only without Drain Part No.	+Endcover Only with Drain Part No.
STAINLESS STEEL ENDCOVERS				
•10"	5067-SS	5067-D-SS	5070-SS	5072-D-SS
12"	5080-SS	5080-D-SS	5085-SS	5085-D-SS
•14"	5065-SS	5065-D-SS	5071-SS	5071-D-SS
16"	5087-SS	5087-D-SS	5089-SS	5089-D-SS
•18"	5091-SS	5091-D-SS	5095-SS	5095-D-SS

End Cover Size	Dimensions			H L	Access Hole Dia.
	A	B	T		
10"	10 ^{3/4} "	1 ^{7/8} "	10 GA	1 ^{1/4} "	8"
12"	12 ^{5/8} "	2 ^{1/8} "	7 GA	1 ^{3/4} "	10"
14"	14 ^{5/8} "	2 ^{7/16} "	7 GA	1 ^{3/4} "	12"
16"	16 ^{5/8} "	2 ^{11/16} "	7 GA	2"	14"
18"	18 ^{5/8} "	2 ^{15/16} "	7 GA	2 ^{1/2} "	16"

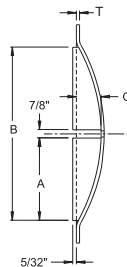
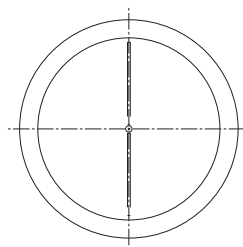
•Non-Stock Items

*NOTE: Endcover Kit Includes – (1) endcover, (1) buna-n gasket, (1) 5/8-11 bolt, (1) nylon washer, (1) baffle lug

+NOTE: Endcover Only Includes – (1) endcover, (1) buna-n gasket

Recommended Torque=15ft/lb

Endcovers with Flow Restrictors



Vescor Endcovers with flow restrictors are a 1 piece unit to restrict the flow of fluid around baffle and endcover dome.

Benefits

- Available in 12", 14", 16", 18" standard endcover sizes
- Easily replaces existing endcover
- Unique 1 piece design, no drilling required
- Readily available from stock
- Uses standard endcover gasket

Recommended Torque:15 ft/lb

NOTE: Stainless Steel Also Available Upon Request

End Cover Size	Dimensions				Endcover Openings	Steel Endcover w /Restrictor with Drain	Steel Endcover w/Restrictor without Drain	Steel Endcover w/Restrictor w/SAE #12 Drain
	A	B	C	T				
12"	4 ^{1/2} "	9 ^{7/8} "	1 ^{1/2} "	7 GA.	10"	5080-R	50800-R	50540
14"	5"	11 ^{7/8} "	1 ^{1/2} "	7 GA.	12"	5065-R	5066-R	50550
16"	5 ^{5/8} "	12 ^{1/8} "	1 ^{3/4} "	7 GA.	12 ^{1/4} "	5087-R	50870-R	50560
18"	7 ^{1/2} "	15 ^{7/8} "	2 ^{1/4} "	7 GA.	16"	5091-R	50910-R	50570

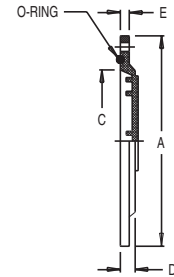
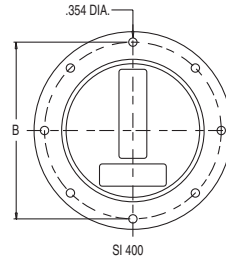
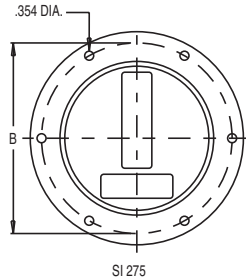


END COVERS

SI Type Endcovers

Features

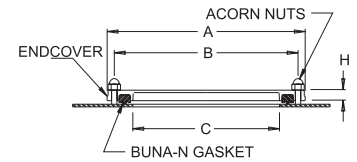
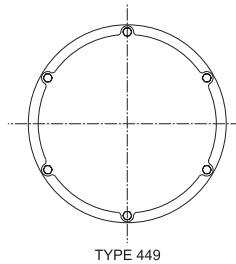
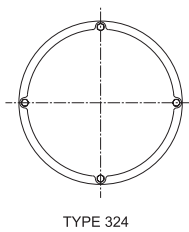
- Cast Aluminum
- Embossed area for sight gauge mounting



Endcover Type	Endcover Kit Part Number	O'Ring Gasket Part Number	SI Type Endcover Part Number	Dimensions					
				A	B B.C.	C Cutout	D	E	Qty. Holes
SI275	136099	OR8850	SI275	10.83	10.04	7.88	0.91	0.47	6
SI400	136199	OR81350	SI400	15.75	14.96	12.75	0.91	0.47	8

Note: Endcover Kit includes (1) SI type endcover and (1) buna-n o-ring gasket

DIN Type Endcovers



Endcover Type	*Endcover Kit No. for All Parts	M10 Acorn Nut Part No.	DIN Type Endcover Gaskets (Buna-N) Part No.	DIN Type Endcover Part No.	Dimensions			
					A Dia.	B B.C.	C Cutout	H
324	136699	108499	V-6701	DIN324	350mm 13.78in	324mm 12.75in	248mm 9.76in	18mm .70in
449	136799	108499	V-6702	DIN449	475mm 18.70in	449mm 17.68in	383mm 15.08in	18mm .70in

*NOTE: Endcover kit includes – (1) din type door, (1) buna-n gasket, (4) or (6) acorn nuts. Endcover includes (1) din type door and (1) buna-n gasket

6" Endcover

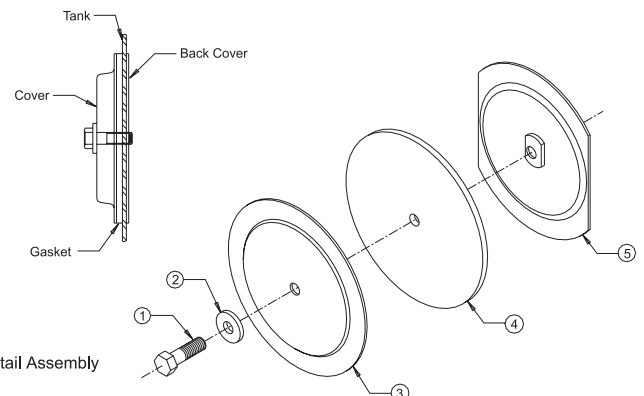


6" Door
Available as Assembly Only
Part Number 1917

Each assembly includes:

1. (1) 3/8" x 1-1/4" long hex head bolt
2. (1) Nylon Washer
3. Cover
4. Buna-N Gasket
5. Back Cover with Weld Nut

Access Opening Dia = 4^{5/8}"

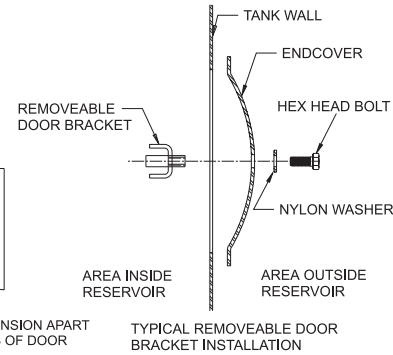
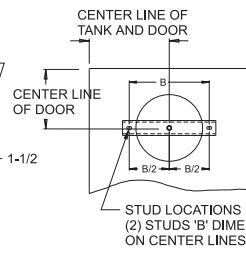
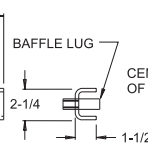
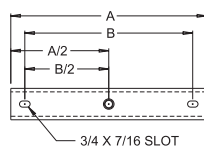
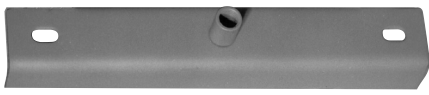


NOTE: WITH VESCORS' POLICY OF CONSTANTLY IMPROVING ITS PRODUCTS, SPECIFICATIONS ARE SUBJECT TO CHANGE WITHOUT NOTICE.



END COVERS

Removable Endcover Brackets



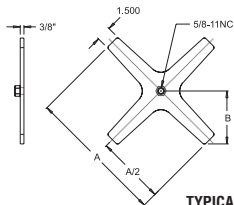
VESCOR® Removable Endcover Brackets are used when a baffle is unavailable to mount endcover and access to inside of reservoir is required.

Each Removable Endcover Bracket Includes:

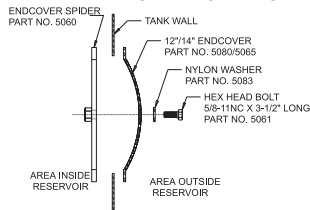
- (1) Removable Endcover Bracket
- *(2) Studs 3/8" x 3/4" long,
- *(2) 3/8" hex nuts, *(2) lockwashers
- *When installed by VESCOR®

Endcover Diameter	Access Hole Diameter	Vescor Part Number	Dimensions (inches)			
			A	A/2	B	B/2
10"	8"	V-5393	12"	6"	10"	5"
12"	10"	V-5392	14"	7"	12"	6"
14" / 16"	12" / 12 1/4"	V-5390	16 1/4"	8 1/8"	14 1/4"	7 1/8"
18"	16"	V-5391	20"	10"	18"	9"

Removable Endcover Spider Kit



TYPICAL REMOVABLE ENDCOVER SPIDER INSTALLATION



VESCOR® Removable Spiders are used when a baffle is unavailable to mount endcover and access to inside of reservoir is required.

Benefits:

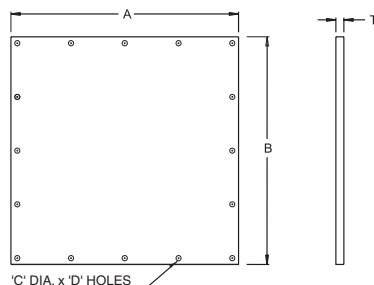
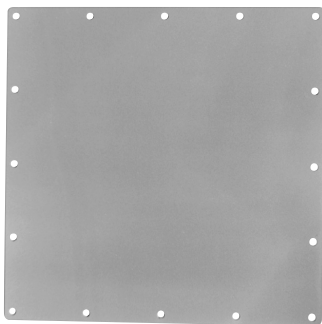
- No welding of studs to mount
- Quick and easy endcover installation
- Available for 12" and 14" endcovers only

Available as kit only – Each kit includes:

- (1) endcover with gasket
- (1) hex head bolt
- (1) removable endcover spider
- (1) nylon washer

Endcover Description	Access Hole Diameter	Vescor Part Number	Dimensions (inches)		
			A	A/2	B
12" w/ no drain	10"	5060-12-S	14"	7"	5 5/16"
14" w/ no drain	12"	5060-14-S	14"	7"	5 5/16"
12" w/ 3/4" NPT drain	10"	5060-12-N-S	14"	7"	5 5/16"
14" w/ 3/4" NPT drain	12"	5060-14-N-S	14"	7"	5 5/16"
12" w/ #12 SAE drain	10"	5060-12-S-S	14"	7"	5 5/16"
14" w/ #12 SAE drain	12"	5060-14-S-S	14"	7"	5 5/16"

Multiple Bolt Endcovers



C' DIA. x 'D' HOLES

VESCOR® Multi Bolt Endcovers can be used on hydraulic reservoirs when a baffle is unavailable to mount a standard endcover and access to reservoir is required.

Benefits:

- Available in 3 sizes
- Multi-bolt for positive sealing
- Weld studs from exterior of reservoir
- Readily available from stock
- Buna-N gasket available from stock

Endcover Size	Access Hole Size	Vescor Part Number	Dimensions (inches)				Qty.	Buna-N Gasket Part Number
			A	B	C	D		
18" x 18"	16" x 16"	5334	18"	18"	7/16"	16	1/4"	5335
12" x 14"	10" x 12"	5283	14"	12"	7/16"	16	1/4"	5079
24" x 24"	22" x 22"	5338	24"	24"	7/16"	24	1/4"	5339