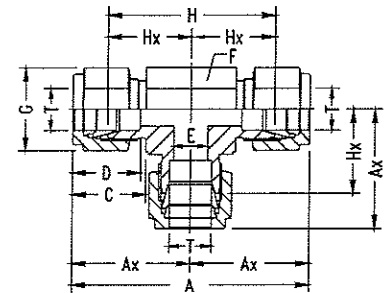


# Double-Ferrule Tube Fittings

## Union Tee N2603

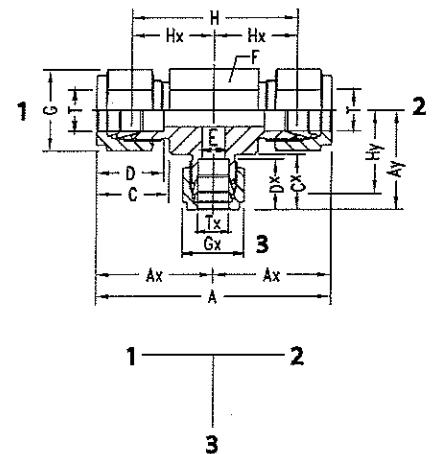
INCH OD Tubes



Part No.	T Tube OD	A	Ax	C	D	E min.	F A/F	G A/F	H	Hx
N2603-01-01-01	1/16	35.6	17.8	11.0	8.6	1.3	11	8	28.0	14.0
N2603-02-02-02	1/8	44.8	22.4	15.3	12.7	2.4	11	11	31.6	15.8
N2603-04-04-04	1/4	53.8	26.9	17.8	15.3	4.8	14	14	39.2	19.6
N2603-05-05-05	5/16	57.4	28.7	18.5	16.3	6.3	16	16	42.6	21.3
N2603-06-06-06	3/8	61.0	30.5	19.3	16.8	7.1	17	17	46.4	23.2
N2603-08-08-08	1/2	72.0	36.0	21.8	22.9	10.4	22	22	51.8	25.9
N2603-10-10-10	5/8	76.2	38.1	21.8	24.4	12.7	24	25	55.8	27.9
N2603-12-12-12	3/4	79.8	39.9	21.8	24.4	15.8	27	28.5	59.4	29.7
N2603-14-14-14	7/8	89.4	44.7	21.8	25.9	18.2	35	32	69.2	34.6
N2603-16-16-16	1	98.0	49.0	26.4	31.2	22.3	35	38	73.6	36.8
N2603-20-20-20	1-1/4	133.2	66.6	38.9	41.2	27.6	46	50	89.0	44.5
N2603-24-24-24	1-1/2	156.0	78.0	45.2	50.0	34.0	55	57	101.6	50.8
N2603-32-32-32	2	214.4	107.4	62.7	67.9	46.0	70	76	139.8	69.9

## Reducing Union Tee N2603

INCH OD Tubes



Part No.	T Tube OD	Tx Tube OD	A	Ax	Ay	C	Cx	D	Dx	E min.	F A/F	G A/F	Gx A/F	H	Hx	Hy
N2603-06-06-04	3/8	1/4	61.0	30.5	29.0	19.3	17.8	16.8	15.3	4.8	16	17	14	46.2	23.1	21.6
N2603-08-08-04	1/2	1/4	72.2	36.0	31.8	21.8	17.8	22.9	15.3	4.8	22	22	14	51.8	25.9	24.4
N2603-08-08-06	1/2	3/8	72.2	36.0	33.3	21.8	19.3	22.9	16.8	7.1	22	22	17	51.8	25.9	25.9
N2603-12-12-06	3/4	3/8	79.8	39.9	37.0	21.8	19.3	24.4	16.8	7.1	27	28.5	17	59.4	29.7	29.7
N2603-12-12-08	3/4	1/2	79.8	39.9	39.9	21.8	21.8	24.4	22.9	10.4	27	28.5	22	59.4	29.7	29.7
N2603-16-16-06	1	3/8	98.0	49.0	41.9	26.4	19.3	31.2	16.8	7.1	35	38	17	73.6	36.8	34.5
N2603-16-16-08	1	1/2	98.0	49.0	44.7	26.4	22.9	31.2	21.8	10.4	35	38	22	73.6	36.8	34.5
N2603-16-16-12	1	3/4	98.0	49.0	44.7	26.4	24.4	31.2	24.4	15.8	35	38	28.5	73.6	36.8	34.5
N2603-20-20-16	1-1/4	1	135.6	67.8	55.1	38.9	26.4	41.2	31.2	22.3	46	50	38	91.4	45.7	42.9
N2603-24-24-16	1-1/2	1	157.5	78.7	60.0	44.7	26.4	50.0	31.2	22.3	55	57	38	103.2	51.6	47.8

continued on next page