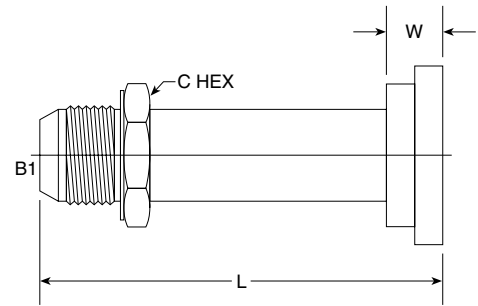


MJ-Flange Straight Code 61 1700 Series

SAE # J518



PART NO. SIZE	TUBE O.D.	FLANGE SIZE	B1 SAE 37	L LGTH	M.M.	W* WIDTH	M.M.	C HEX	C HEX	M.M.	Standard Material From Stock			
											S	FG	SS	B
1700-08-08	1/2	1/2	3/4-16	2.350	59.69	0.500	12.70	13/16	0.812	20.62	•		•	
1700-08-12	1/2	3/4	3/4-16	2.350	59.69	0.560	14.22	1 1/4	1.125	28.57	•			
NEW 1700-10-10											•			
NEW 1700-12-10											•			
1700-12-12	3/4	3/4	1 1/16-12	2.600	66.04	0.560	14.22	1 1/4	1.125	28.57	•		•	
1700-12-16	3/4	1	1 1/16-12	2.600	66.04	0.560	14.22	1 1/4	1.125	28.57	•		•	
1700-12-20	3/4	1 1/4	1 1/16-12	2.600	66.04	0.560	14.22	1 3/8	1.375	34.92	•			
NEW 1700-12-24											•			
1700-16-12	1	3/4	1 5/16-12	2.640	67.04	0.560	14.22	1 3/8	1.375	34.92	•		•	
1700-16-16	1	1	1 5/16-12	2.640	67.04	0.560	14.22	1 3/8	1.375	34.92	•			
1700-16-20	1	1 1/4	1 5/16-12	2.640	67.04	0.560	14.22	1 3/8	1.375	34.92	•			
1700-16-24	1	1 1/2	1 5/16-12	2.640	67.04	0.620	15.75	2	2.000	50.80	•			
1700-20-16	1 1/4	1	1 5/8-12	3.125	79.38	0.560	14.22	1 11/16	1.687	42.85	•			
1700-20-20	1 1/4	1 1/4	1 5/8-12	3.125	79.38	0.560	14.22	1 11/16	1.687	42.85	•		•	
1700-20-24	1 1/4	1 1/2	1 5/8-12	2.687	68.25	0.620	15.75	2	2.000	50.80	•			
1700-20-32	1 1/4	2	1 5/8-12	3.100	78.74	0.620	16.00	1 11/16	1.688	42.88	•			
NEW 1700-24-16											•			
1700-24-20	1 1/2	1 1/4	1 7/8-12	3.000	76.20	0.560	14.22	2	2.000	50.80	•			
1700-24-24	1 1/2	1 1/2	1 7/8-12	3.000	76.20	0.620	15.75	2	2.000	50.80	•		•	
1700-24-32	1 1/2	2	1 7/8-12	3.000	76.20	0.620	16.00	2	2.000	50.80	•			
1700-32-24	2	1 1/2	2 1/2-12	3.350	85.09	0.620	15.75	2 3/4	2.750	69.85	•			
1700-32-32											•			